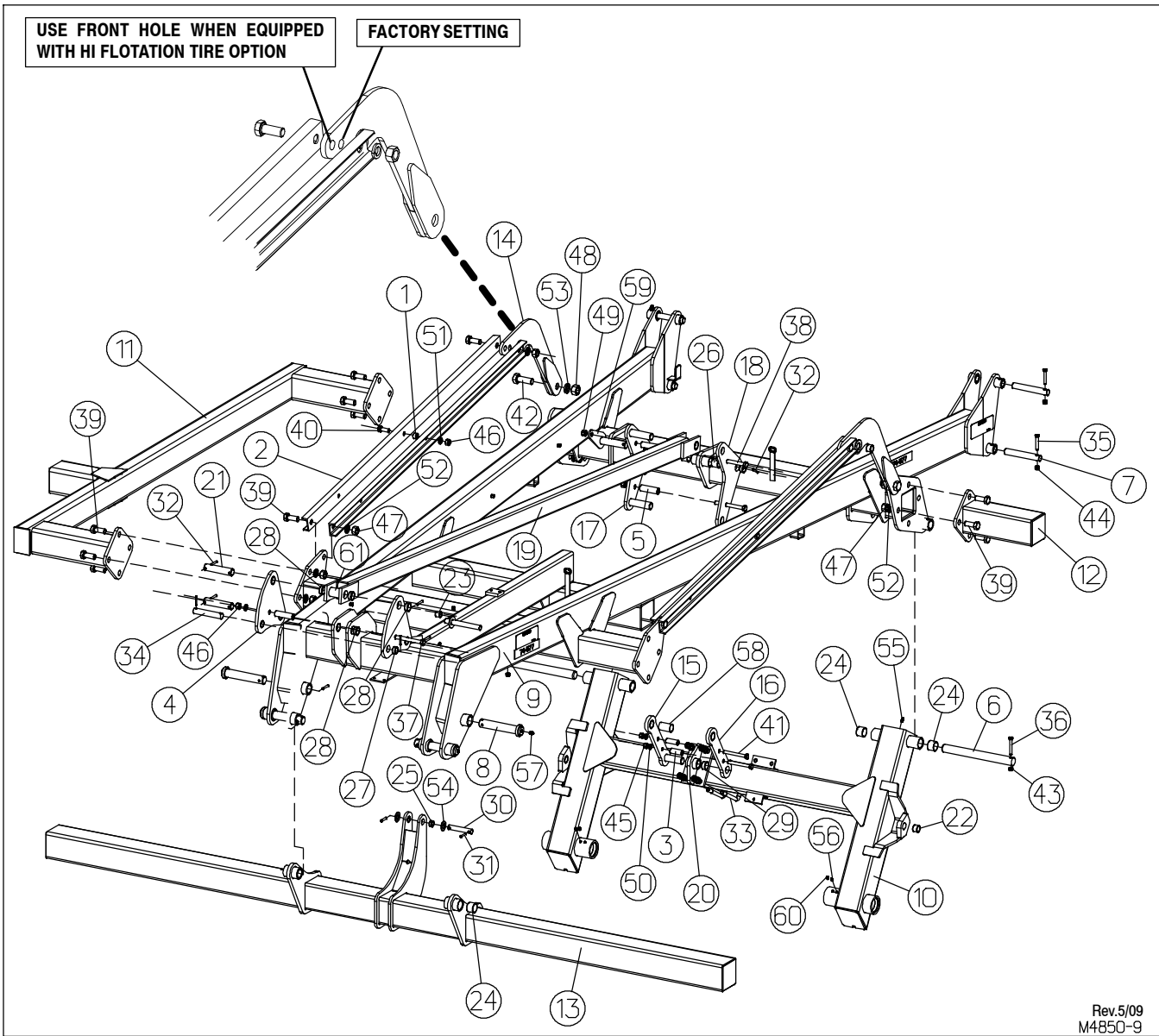


CENTER FRAME (12' & 15')



Rev.5/09
M4850-9

FOR MODELS - 12' & 18'

APR09

Item	Part Number	Part Description	Qty.
1	4600-36-1	Spacer	2
2	4850-0-1	Cylinder Link	4
3	4850-0-2	Spacer Tube	2
4	4850-0-4	Front Link Plate	2
5	4850-0-5	Spacer Tube	3
6	4850-0-6	Rocker Pivot Pin	2
7	4850-0-31	Pin	4
8	4850-45-0	Pivot Pin Weldment	4
9	4850-5001-0	Center Frame Weldment - 12' & 15'	1
10	4850-5010-0	Center Rocker Weldment	1
11	4850-5020-0	Frame End Weldment - 15'	1
12	4850-5021-0	Extension Weldment - 12'	1
13	4850-5034-0	Coulter Beam Weldment - 15'	1
	4850-2033-0	Coulter Beam Weldment - 12'	1
14	4850-5040-0B	Cylinder Lug Weldment	2
15	4850-5041-0	Rocker Link Weldment	1
16	4850-5041-1	Rocker Link	2

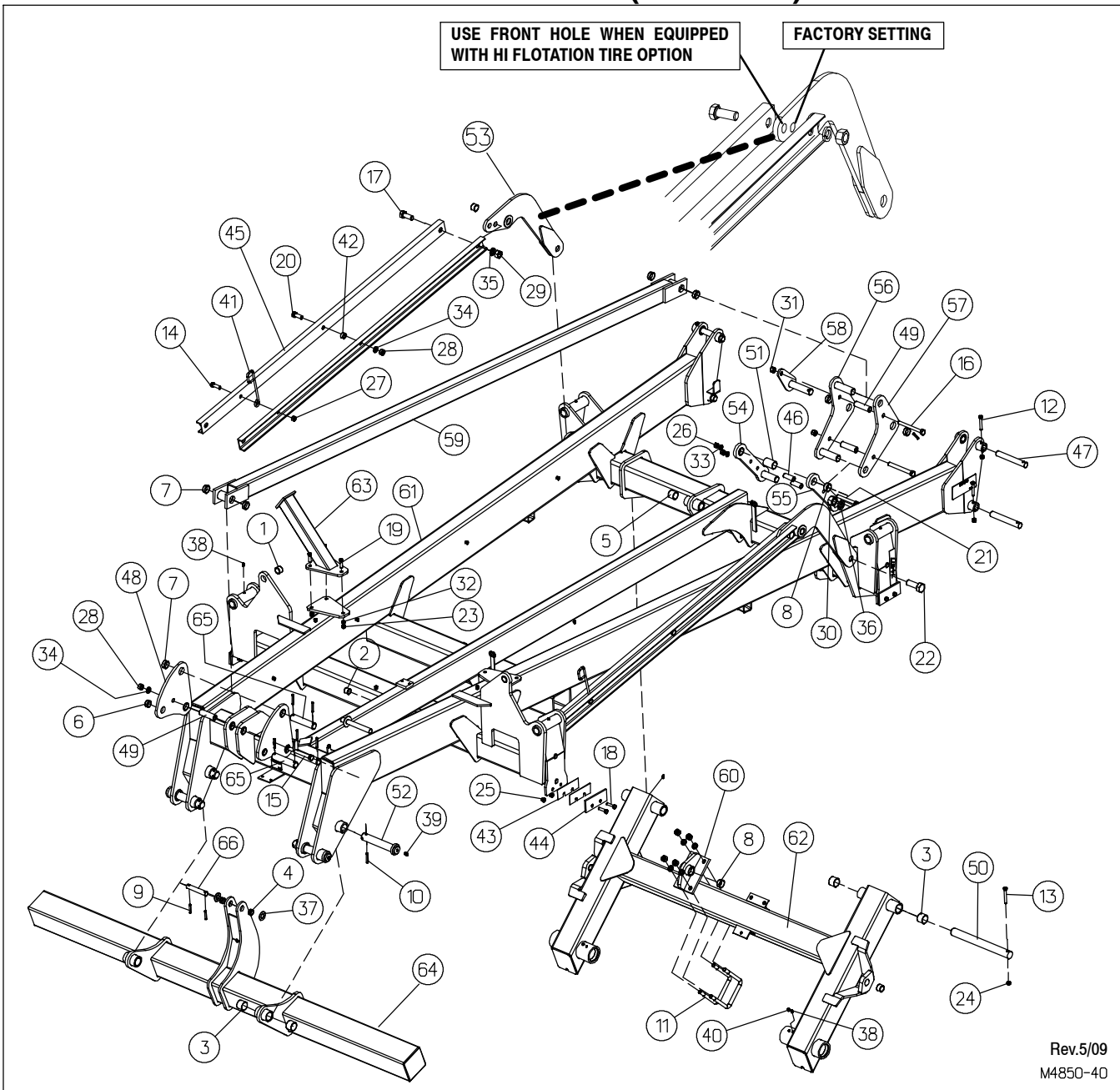
CENTER FRAME (12' & 15') CONT'D

FOR MODELS - 12' & 18'

APR09

<i>Item</i>	<i>Part Number</i>	<i>Part Description</i>	<i>Qty.</i>
17	4850-5042-0	Rear Link Weldment	1
18	4850-5042-1	Rear Link	2
19	4850-5084-0	Link Weldment	1
20	4850-51-0	Rocker Pivot Weldment	1
21	4881-0000-4	1-1/2 x 6-3/4" Pin	3
22	53-101	Wear Bushing	4
23	53-102	Wear Bushing	1
24	53-110	Wear Bushing	8
25	53-116	Wear Bushing	2
26	53-118	Wear Bushing	2
27	53-135	Wear Bushing	2
28	53-163	Wear Bushing	12
29	53-166	Wear Bushing	4
30	5630-0-6	Pin (1" x 5-5/8")	1
31	60-615	3/8 x 2" Roll Pin	2
32	60-616	3/8 x 2-1/4" Roll Pin	9
33	61-111	3/4" DIA. U-Bolt	2
34	6127-0-11	Pin	1
35	62-151	1/2NC x 3" Gd5 Cap Screw	4
36	62-154	1/2NC x 3-1/2" Gd5 Cap Screw	2
37	62-213	3/4NC x 6-1/2" Gd5 Cap Screw	1
38	62-215	3/4NC x 7" Gd5 Cap Screw	2
39	62-236	1NC x 2-1/2" Gd5 Cap Screw	16
40	62-421	3/4NC x 2" Gd5 Cap Screw	2
41	62-566	5/8NC x 5-1/2" Gd5 Cap Screw	2
42	62-678	1-1/4NC x 7-1/2" Gd 5 Cap Screw	2
43	63-107	1/2NC Lock Nut	2
44	63-108	1/2NC Nylon-Top Lock Nut	4
45	63-109	5/8NC Hex Nut	2
46	63-112	3/4NC Hex Nut	7
47	63-117	1NC Hex Nut	16
48	63-123	1-1/4NC Hex Nut	2
49	63-162	3/4NC Nylon-Top Lock Nut	2
50	64-109	5/8" Lock Washer	2
51	64-112	3/4" Lock Washer	7
52	64-118	1" Lock Washer	16
53	64-125	1-1/4" Lock Washer	2
54	64-155	1" SAE Flat Washer	2
55	65-100	1/8 x 45° Zerk	3
56	65-101	1/8" STD. Zerk	2
57	65-103	1/4" STD. Zerk	4
58	4850-0-8	Spacer Bushing	1
59	4850-5044-0	Pivot Pin Weldment	1
60	65-117	1/8" Grease Pressure Relief	2
61	4850-5084-1	Spacer	2

CENTER FRAME (18' & 21')



Rev.5/09
M4850-40

FOR MODELS - 18' & 21'

APR09

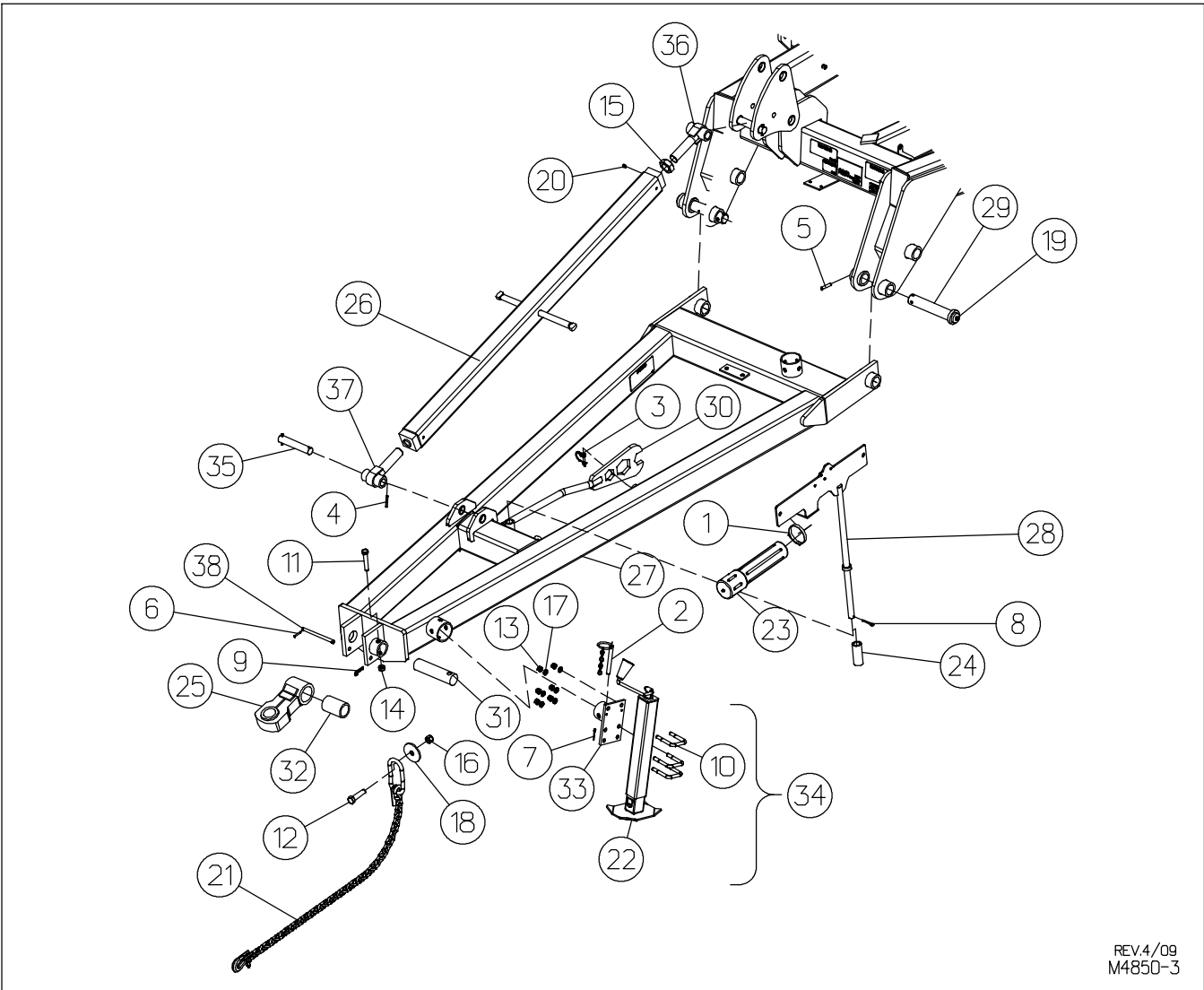
Item	Part Number	Part Description	Qty.
1	53-101	Wear Bushing	6
2	53-102	Wear Bushing	1
3	53-110	Wear Bushing	8
4	53-116	Wear Bushing	2
5	53-118	Wear Bushing	2
6	53-135	Wear Bushing	2
7	53-163	Wear Bushing	12
8	53-166	Wear Bushing	4
9	60-615	3/8" x 2" Roll Pin	2
10	60-616	3/8 x 2-1/4" Roll Pin	11
11	61-111	3/4" DIA. U-Bolt	2
12	62-151	1/2NC x 3" Gd5 Cap Screw	4
13	62-154	1/2NC x 3-1/2" Gd5 Cap Screw	2
14	62-169	5/8NC x 2" Gd5 Cap screw	2
15	62-213	3/4NC x 6-1/2" Gd5 Cap Screw	1

FOR MODELS - 18' & 21' (CONT'D)

APR09

Item	Part Number	Part Description	Qty.
16	62-215	3/4NC x 7" Gd5 Cap Screw	2
17	62-236	1NC x 2-1/2" Gd5 Cap Screw	4
18	62-343	1/2NC x 2" Gd5 Cap Screw	8
19	62-414	1/2NC x 1-3/4" Gd5 Cap Screw	3
20	62-421	3/4NC x 2" Gd5 Cap Screw	2
21	62-566	5/8NC x 5-1/2" Gd5 Cap Screw	2
22	62-678	1-1/4NC x 3-1/2" Gd5 Cap Screw	2
23	63-106	1/2NC Hex Nut	3
24	63-107	1/2NC Lock Nut	2
25	63-108	1/2NC Nylon-Top Lock Nut	12
26	63-109	5/8NC Hex Nut	2
27	63-110	5/8NC Lock Nut	2
28	63-112	3/4NC Hex Nut	7
29	63-117	1NC Hex Nut	4
30	63-123	1-1/4NC Hex Nut	2
31	63-162	3/4NC Nylon-Top Lock Nut	2
32	64-107	1/2" STD. Lock Washer	3
33	64-109	5/8" Lock Washer	2
34	64-112	3/4" Lock Washer	7
35	64-118	1" Lock Washer	4
36	64-125	1-1/4" Lock Washer	2
37	64-155	1" SAE Flat Washer	2
38	65-101	1/8" STD. Zerk	9
39	65-103	1/4" STD. Zerk	3
40	65-117	1/8" Grease Pressure Relief	2
41	76-216	Hose Support	2
42	4600-36-1	Spacer	2
43	4700-0-42	Shim	8
44	4700-0-43	Stop Plate	4
45	4850-0-1	Cylinder Link	4
46	4850-0-2	Spacer Tube	2
47	4850-0-31	Pin	4
48	4850-0-4	Front Link Plate	2
49	4850-0-5	Spacer Tube	3
50	4850-0-6	Rocker Pivot Pin	2
51	4850-0-8	Spacer Bushing	1
52	4850-45-0	Pivot Pin Weldment	4
53	4850-5040-0B	Cylinder Lug Weldment	2
54	4850-5041-0	Rocker Link Weldment	1
55	4850-5041-1	Rocker Link	1
56	4850-5042-0	Rear Link Weldment	1
57	4850-5042-1	Rear Link	2
58	4850-5044-0	Pivot Pin Weldment	1
59	4850-5084-0	Link Weldment	1
60	4850-51-0	Rocker Pivot Weldment	1
61	4850-8001-0A	Center Frame Weldment 18' & 21'	1
62	4850-8010-0	Center Rocker Weldment	1
63	4850-8012-0A	Wing Support Weldment	1
64	4850-8035-0	Coulter Beam Weldment	1
65	4881-0000-4	1-1/2 x 6-3/4" Pin	3
66	5630-0-6	1" x 5-5/8" Pin	1

STANDARD TONGUE



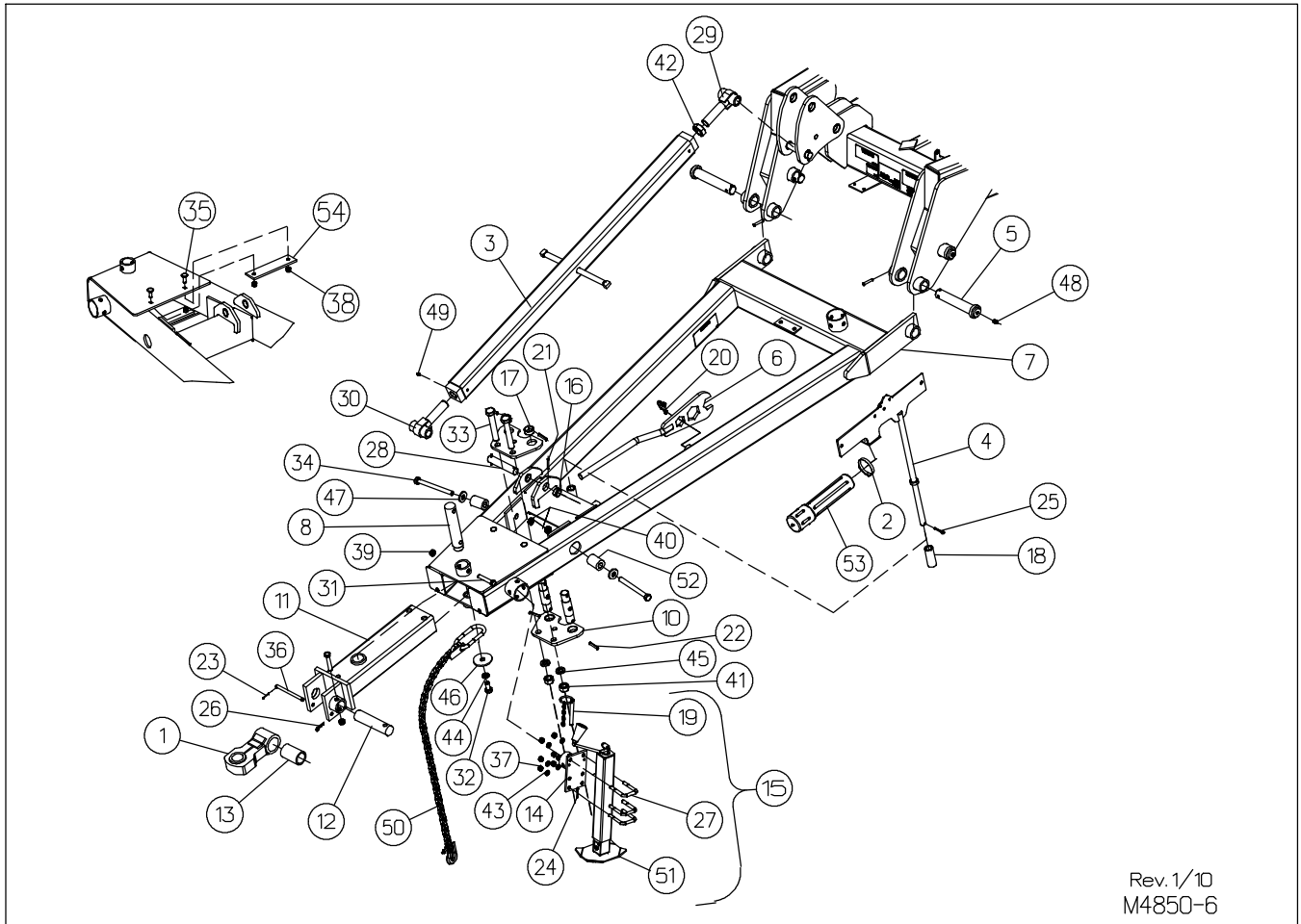
REV.4/09
M4850-3

FOR MODELS - ALL

APR09

Item	Part Number	Part Description	Qty.	Item	Part Number	Part Description	Qty.
1	25-1163	Clamp, Screw Type	1	22	73-111	Jack Assembly	1
2	60-106	FAS Pin	1	23	99-218	Owner's Manual Storage Canister	1
3	60-109	P.T.O. Lock Pin	1	24	570-0-8	Spacer	1
4	60-606	Roll Pin, 1/4"D x 2"	4	25	2135-54-0	Crawler Clevis Weldment	1
5	60-616	Roll Pin, 3/8"D x 2-1/4"	2	■	4850-52-0	Category 5 Crawler Clevis (not shown)	
6	60-626	3/16" DIA x 1-1/2" Roll Pin	1	26	4830-35-0	Turnbuckle Weldment	1
7	60-702	Cotter Pin, 3/16D x 1-1/2"	1	27	4850-2030-0	Tongue Weldment	1
8	60-708	Cotter Pin, 1/4"D x 1-3/4"	1	28	4850-39-0	Hose Stand Weldment	1
9	60-716	#3 Hair Pin Cotter	1	29	4850-45-0	Pivot Pin Weldment	2
10	61-172	U-Bolt, .50D x 2.56W x 3.75L	3	30	4850-49-0	Combination Wrench Weldment	1
11	62-176	5/8NC x 3-1/2" Gd5 Cap Screw	1	31	4885-0-5	Hitch Pin	1
12	62-197	3/4NC x 3"Gd5 Cap Screw	1	32	4885-0-6	Hitch Bushing	1
13	63-106	1/2NC Hex Nut	6	33	4956-55-0A	Jack Mount Bracket Weldment	1
14	63-110	5/8NC Lock Nut	1	34	4956-56-0	Jack Assembly	1
15	63-129	1-1/2NC Hex Jam Nut	1	35	6127-0-11	Pin	2
16	63-162	3/4NC Nylon-Top Lock Nut	1	36	6142-82-0	Right-Hand Threaded End	1
17	64-107	1/2" STD. Lock Washer	6	37	6142-83-0	Left-Hand Threaded End	1
18	64-147	Washer, 3-1/2 x 13/16 x 1/4"	1	38	6200-90-1	Pin	1
19	65-103	1/4" STD Zerk	2	■ For use on 18-21 Dominators ONLY Contact Krause Customer Service for field install option			
20	65-114	1/4" Thread Cutting Zerk	2				
21	72-352	Safety Chain (20,000#)	1				

OPTIONAL CUSHION TONGUE



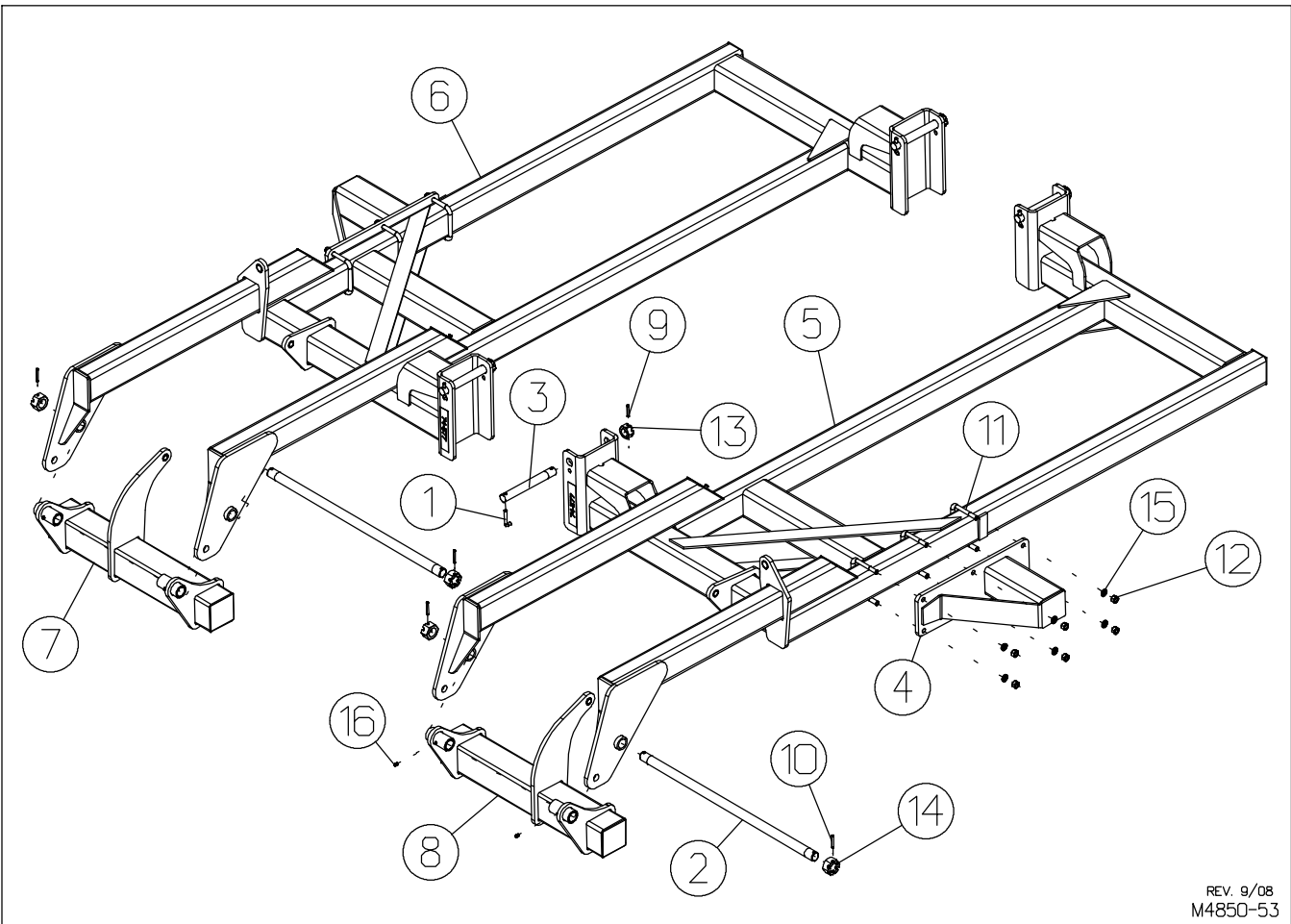
Rev. 1/10
M4850-6

FOR MODELS - ALL

APR10

Item	Part Number	Part Description	Qty.	Item	Part Number	Part Description	Qty.
1	2135-54-0	Crawler Clevis Weldment	1	29	6142-82-0	Right-Hand Threaded End	1
	■ 4850-52-0	Category 5 Crawler Clevis (not shown)		30	6142-83-0	Left-Hand Threaded End	1
2	25-1163	Clamp, Screw Type	1	31	62-176	5/8NC x 3-1/2" Gd5 Cap Screw	3
3	4830-35-0	Turnbuckle Weldment	1	32	62-191	3/4NC x 1-1/2" Gd5 Cap Screw	1
4	4850-39-0	Hose Stand Weldment	1	33	62-251	1NC x 6-1/2" Gd5 Cap Screw	2
5	4850-45-0	Pivot Pin Weldment	4	34	62-301	3/4NC x 8" Gd5 Cap Screw	2
6	4850-49-0	Combination Wrench Weldment	1	35	62-474	1/2NC x 1-1/2" Gd5 Carriage Bolt	4
7	4850-5030-0	Tongue Weldment	1	36	6200-90-1	Pin	1
8	4881-0000-3	Hitch Pin	1	37	63-106	1/2NC Hex Nut	6
9	4881-0000-5A	Pivot Pin	2	38	63-108	1/2NC Nylon-Top Lock Nut	4
10	4881-7086-0A	Hitch Shock Mount	2	39	63-110	5/8NC Lock Nut	3
11	4881-9032-0	Hitch Weldment	1	40	63-113	3/4NC Hex Jam Nut	2
12	4885-0-5	Hitch Pin	1	41	63-117	1NC Hex Nut	2
13	4885-0-6	Hitch Bushing	1	42	63-129	1-1/2NC Hex Jam Nut	1
14	4956-55-0A	Jack Mount Bracket Weldment	1	43	64-107	1/2" STD. Lock Washer	6
15	4956-56-0	Jack Assembly	1	44	64-112	3/4" STD. Lock Washer	1
16	53-135	Wear Sleeve 1.50 x 1.28 x .62	1	45	64-118	1" Lock Washer	2
17	53-166	Wear Sleeve 1.75 x 1.53 x .75	4	46	64-147	Spec. Washer 3.50 x .81 x .25	1
18	570-0-8	Spacer	1	47	64-215	Spec. Washer 2.00 x .81 x .25	2
19	60-106	FAS Pin	1	48	65-103	1/4" STD. Zerk	4
20	60-109	P.T.O. Lock Pin	1	49	65-114	Thread Cutting Zerk	2
21	60-606	Roll Pin, 1/4"D x 2"	4	50	72-352	Safety Chain (20,000#)	1
22	60-616	Roll Pin, 3/8"D x 2-1/4"	8	51	73-111	Jack Assembly	1
23	60-626	3/16" DIA x 1-1/2" Roll Pin	1	52	76-231	Urethane Spring 2.0 x 1.0 x 2.75	2
24	60-702	Cotter Pin, 3/16"D x 1-1/2"	1	53	99-218	Owner's Manual Storage Canister	1
25	60-708	Cotter Pin, 1/4"D x 1-3/4"	1	54	99-243	Poly Skid Plate	2
26	60-716	#3 Hair Pin Cotter	1	■ For use on 18-21 Dominators ONLY Contact Krause Customer Service for field install option			
27	61-172	U-Bolt, .50D x 2.56W x 3.75L	3				
28	6127-0-11	Pin	2				

WING ASSEMBLIES



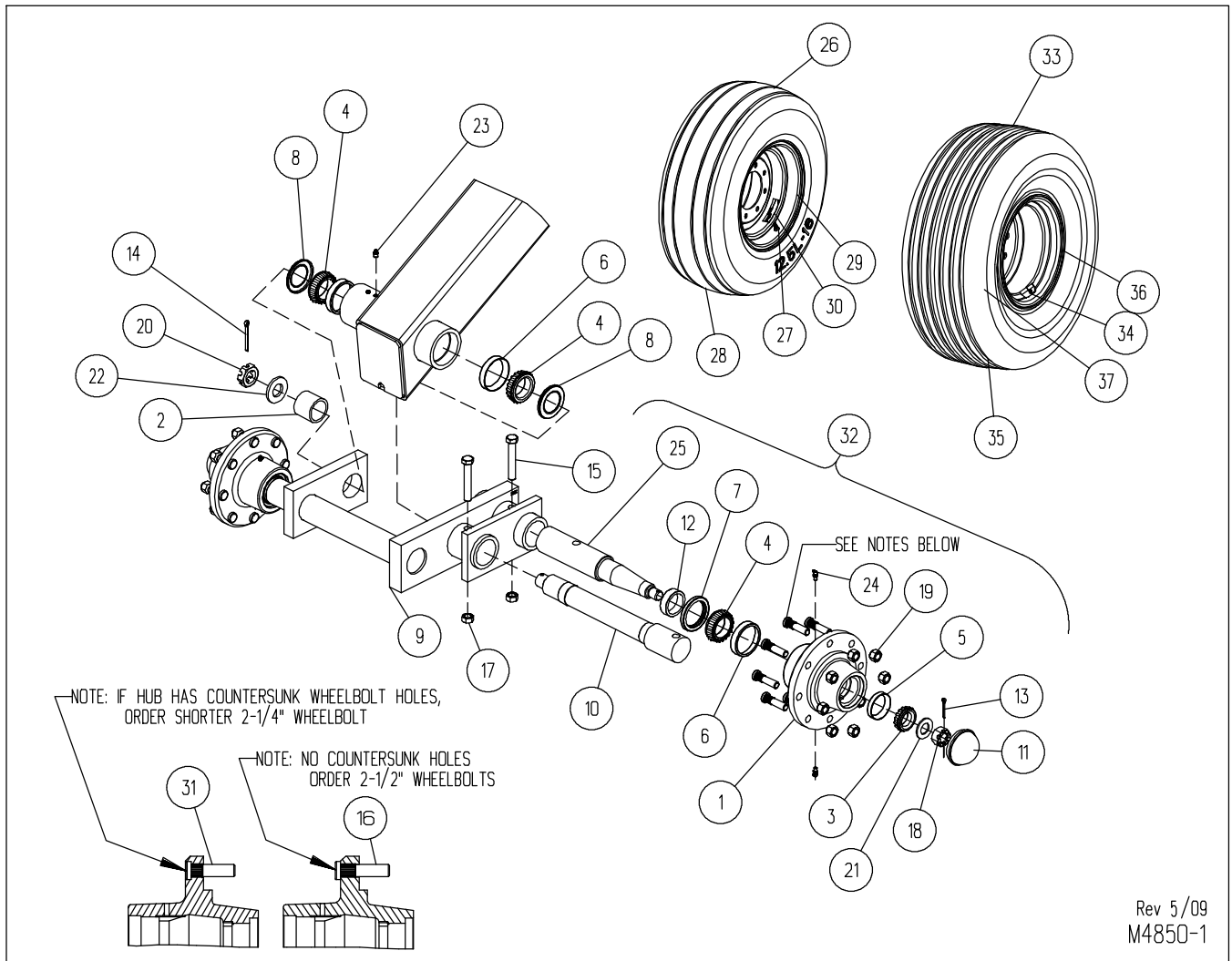
REV. 9/08
M4850-53

FOR MODELS - ALL

SEP05

Item	Part Number	Part Description	Qty.
1	1901-0-2	Hinge Pin Lock	4
2	4850-0-39	Coulter Pivot Shaft	2
3	4850-0-40	Hinge Pin	4
4	4850-1021-0	Shank Extension Weldment - 21'	2
5	4850-8018-0	Left Wing Weldment	1
6	4850-8020-0	Right Wing Weldment	1
7	4850-8036-0	Right Coulter Beam - 18'	1
	4850-1036-0	Right Coulter Beam - 21'	1
8	4850-8037-0	Left Coulter Beam - 18'	1
	4850-1037-0	Left Coulter Beam - 21'	1
9	60-616	3/8" x 2-1/4" Roll Pin	4
10	60-617	3/8"D x 2-1/2" Roll Pin	4
11	61-120	3/4" U-Bolt - 21'	6
12	63-112	3/4NC Hex Nut - 21'	12
13	63-128	1-1/2NC GD2 Slotted Hex Nut	4
14	63-132	1-3/4NC Hex Lock Nut	4
15	64-112	3/4" Lock Washer - 21'	12
16	65-101	1/8" STD. Zerk	4

WALKING BEAM ASSEMBLY



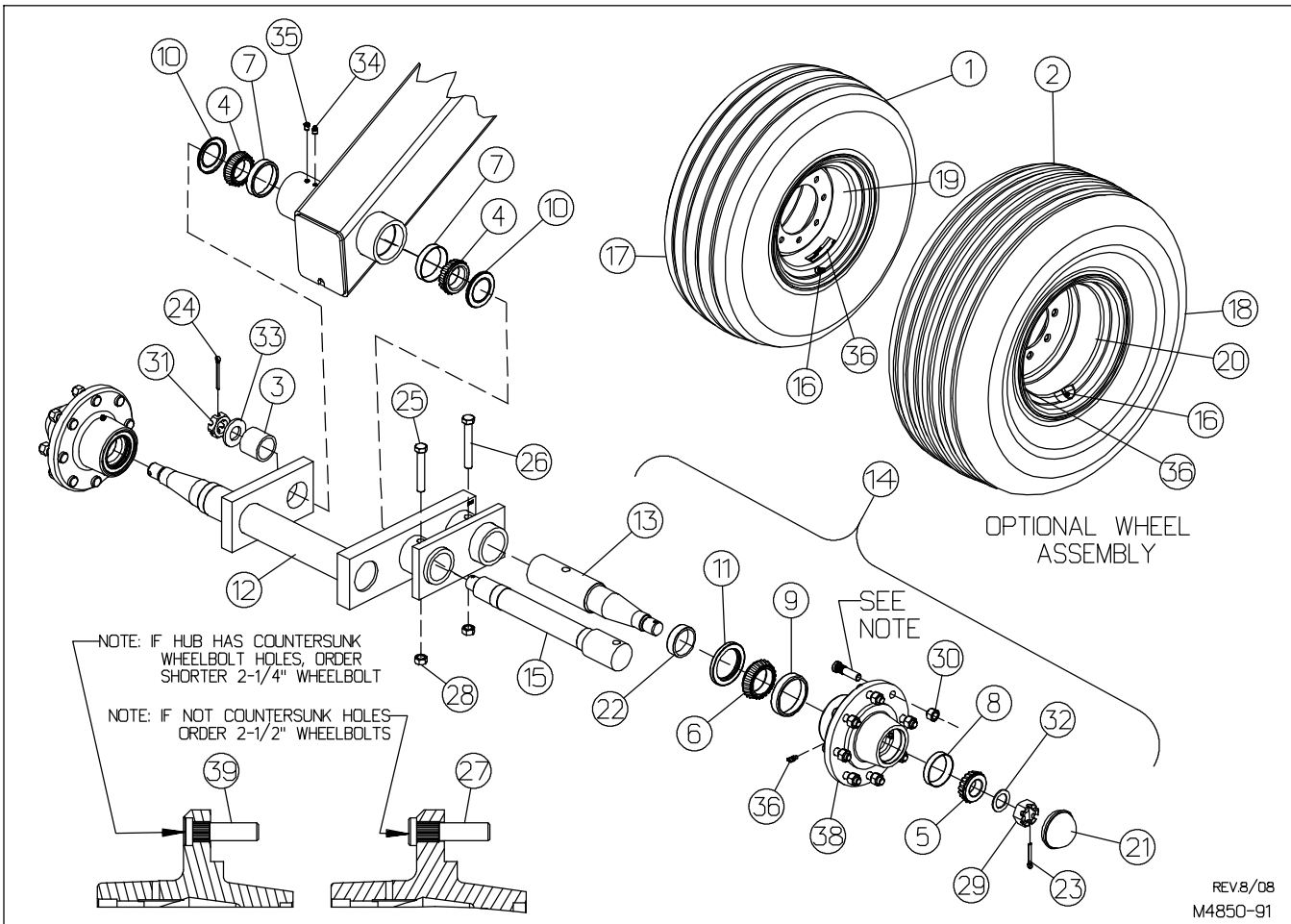
Rev 5/09
M4850-1

FOR MODELS - 12' & 15'

MAY09

Item	Part Number	Part Description	Qty.	Item	Part Number	Part Description	Qty.
1	★ 2490-96-0	Repair Hub Assembly	2	20	63-231	1-1/4NF Slotted Jam Nut	1
2	2490-90-3	Bushing	1	21	★ 64-120	1"HT SAE Black Flat Washer	2
3	★ 41-112	Cone Timken# LM-48548)	2	22	64-167	SpecWasher 2-1/2 x 1-9/32 x 1/4	1
4	41-114	Cone (Timken# LM-104949)	4	23	65-101	1/8" STD. Zerk	1
5	41-208	Cup (Timken# LM-48510)	2	24	65-122	1/4 x 65° Spin Drive Zerk	4
6	41-210	Cup (Timken# LM-104911)	2	25	★ 4850-56-0	Spindle Assembly	1
7	42-109	Seal (#410605)	2	26	1000-12640-01	Wheel Assembly	1
8	42-131	Seal (Clark # CY-LM104911)	2	27	51-107	Valve Stem	1
9	4850-54-0	Walking Beam Weldment	1	28	51-122	Tire 12.5L x 16 14-Ply	1
10	4987-9-1	Pivot Spindle	1	29	52-112	Wheel 16 x 10 8-Bolt	1
11	★ 52-302	Hub Cap	2	30	74-109	Decal - Caution Wheel Bolt	1
12	53-108	Wear Sleeve 2.50od x 1.99id x .75	1	31	62-311	5/8NF x 2-1/4" Wheel Bolt	16
13	★ 60-702	3/16"D x 1-1/2"Cotter Pin	2	32	4850-58-0	Hub & Spindle Assy (★ Items Included)	2
14	60-710	Cotter Pin, 1/4"D x 2-1/2"	1	33	1000-14641-01	Wheel Assembly (● Items Below)	1
15	62-178	5/8NC x 4"Gd5 Cap Screw	2	34	● 51-107	Valve Stem	1
16	62-851	5/8NF x 2-1/2" Wheel Bolt	16	35	● 51-135	Tire 14L-16.1 14 Ply	1
17	63-110	5/8NC Lock Nut	2	36	● 52-116	Wheel 16.1 x 11 8-Bolt 1.50"Offset	1
18	★ 63-204	1NF Slotted Hex Nut	2	37	● 74-109	Decal Caution Check Wheel Bolt	1
19	63-208	5/8NF Lug Nut	16				

LARGE WALKING BEAM ASSEMBLY



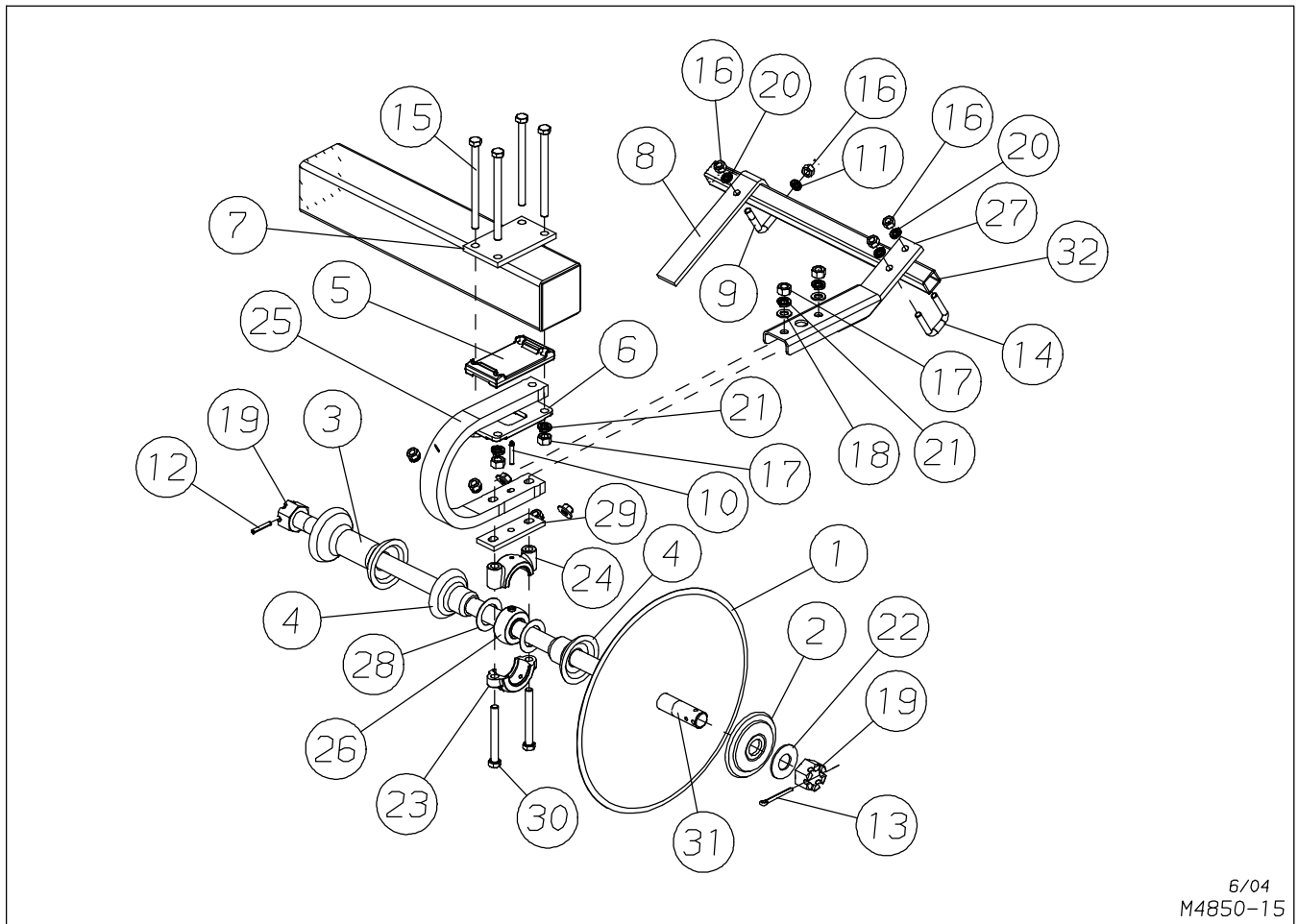
REV 8/08
M4850-91

FOR MODELS - 18' & 21'

SEP08

Item	Part Number	Part Description	Qty.	Item	Part Number	Part Description	Qty.
1	1000-12540-01	Wheel Assm 12.5Lx15 L. R. "F"	1	21	52-302	Hub Cap	2
2	1000-14641-01	Tire & Wheel Assembly (16 x 11)	1	22	53-174	Wear Sleeve 2.75od x 2.36id x .75	2
3	2490-90-3	Bushing	1	23	60-708	Cotter Pin 1/4"D x 1-3/4"	2
4	41-114	Cone (Timken #LM104944)	2	24	60-710	Cotter Pin 1/4" D x 2-1/2"	1
5	41-123	Cone (Timken #28150)	2	25	62-178	5/8NC x 4" GD5 Cap Screw	1
6	41-124	Cone (Timken JLM508748)	2	26	62-339	5/8NC x 4-1/2" GD5 Cap Screw	1
7	41-210	Cup (Timken #LM104911)	2	27	62-851	5/8NF x 2-1/2" Wheel Bolt	16
8	41-221	Cup (Timken #28300)	2	28	63-110	5/8NC Lock Nut	2
9	41-222	Cup (Timken #LM508710)	2	29	63-205	1-1/4NF Slotted Hex Nut	2
10	42-131	Seal (Clark #CY-LM104911)	2	30	63-208	5/8NF Lug Nut	16
11	42-136	Oil Seal (National 415960)	2	31	63-231	1-1/4NF Slotted Jam Nut	1
12	4850-8054-0	Walking Beam Weldment	1	32	64-138	Special Washer 2 x 1.31 x .125	2
13	4850-8056-0	Spindle Assembly	1	33	64-167	Special Washer 2.5 x 1.28 x .25	1
14	4850-8058-0	Heavy Hub & Spindle Assembly	1	34	65-101	1/8" STD. Zerk	1
15	4987-9-1	Pivot Spindle	1	35	65-117	Pressure Relief Valve	1
16	51-107	Valve Stem	2	36	65-122	1/4 x 65° Spin Drive Zerk	4
17	51-132	Tire 12.5L x 15, F, Hi-Way Service	1	37	74-109	Decal Caution Wheel Bolts	1
18	51-135	Tire 14L-16, I 14-Ply	1	38	4881-1096-0	8-Bolt Hub	2
19	52-114	Wheel 15 x 10 8-Bolt	1	39	62-311	Wheel Bolt 5/8NF x 2-1/4"	spec
20	52-116	Wheel 16.1 x 11 8-Bolt 1.50"Offset	1				

COULTER GANG ASSEMBLY

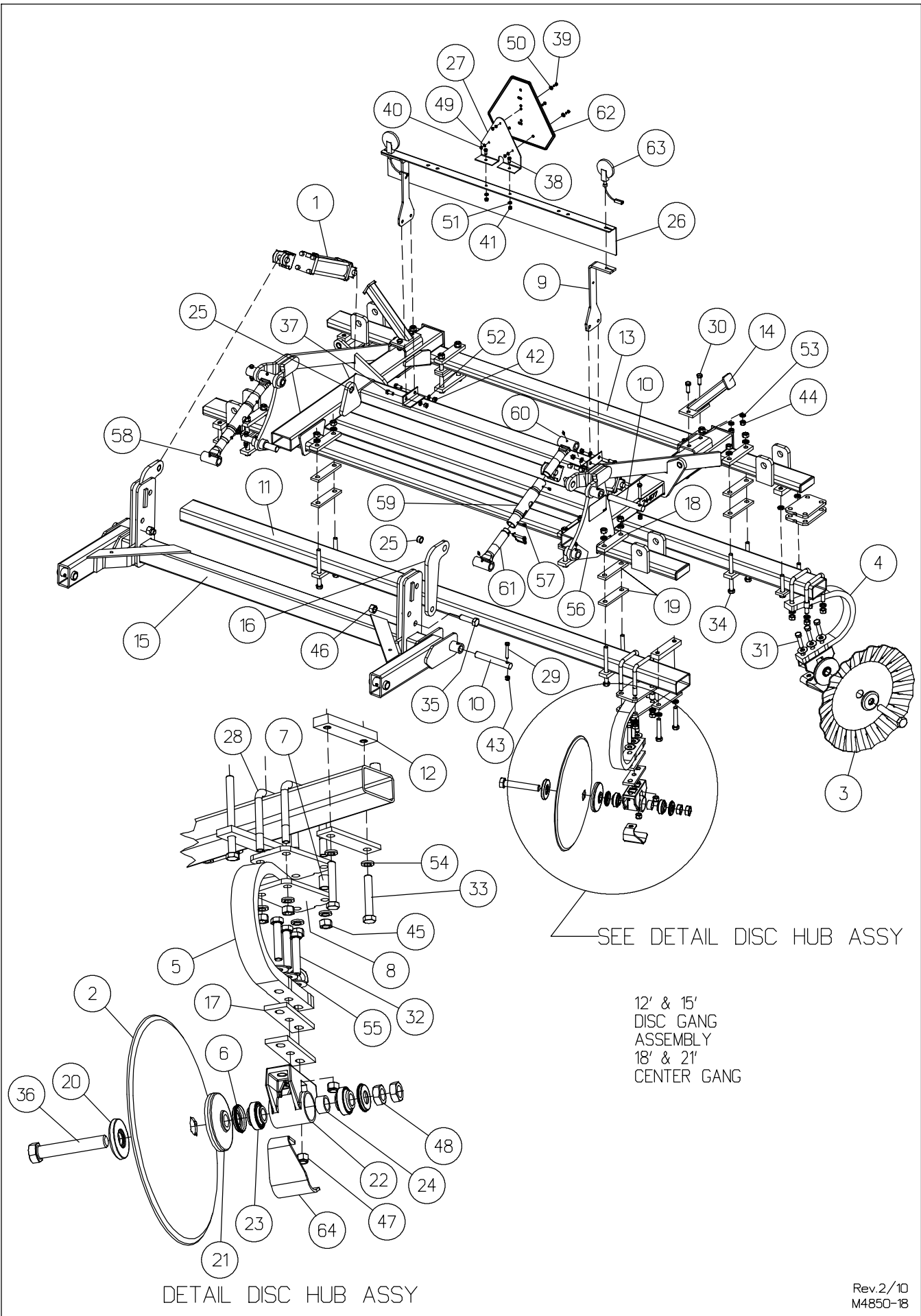


6/04
M4850-15

FOR MODELS - ALL

APR10

Item	Part Number	Part Description	Qty.	Item	Part Number	Part Description	Qty.
1	30-246	Coulter Blade (25" x 1/4")	S P E C I F Y	22	64-136	3" x 1/4" Special Washer	S P E C I F Y
2	45-107	End Washer		23	4850-10-1	Lower Bearing Housing	
3	4850-0-7	9" Spacer Spool		24	4850-10-2	Upper Bearing Housing	
4	4850-0-9	Half Spool		25	31-210A	Shank (1-1/4 x 2-1/2)	
5	4850-0-20	Shank Base		26	40-167	Superseal Bearing	
6	4850-0-21	Bolt Plate		27	4850-5043-0	Trash Bar Mount	
7	4850-0-22	Bolt Plate		28	45-105	Side Ring	
8	4850-0-11	Trash Bar		29	4850-5037-1A	Spacer Plate	
9	61-238	5/8"D . L-Bolt		30	62-213	3/4NC x 6-1/2"Gd5 Cap Screw	
10	65-123	1/8NPT x 2-5/32" Zerk		31	★ 7301-0-4	Tie Rod, 1-3/4" x 42-7/8"	
11	64-110	5/8" Flat Washer			★ 4995-0-1	Tie Rod ,1-3/4" x 52-1/8"	
12	60-617	3/8"D. x 2-1/2" Roll Pin			★ 7301-0-3	Tie Rod, 1-3/4" x 60-3/4"	
13	60-714	3/8"D x 3-1/2" Cotter Pin			★ 1050-20-1	Tie Rod, 1-3/4" x 70"	
14	61-119	5/8" U-Bolt		32	★ 4850-1-435	Scraper Tube, 43-1/2"	
15	62-827	3/4NC x 10"Gd5 Cap Screw			★ 4850-1-510	Scraper Tube, 51"	
16	63-109	5/8NC Hex Nut			★ 4850-1-535	Scraper Tube, 53-1/2"	
17	63-112	3/4NC Hex Nut			★ 4850-1-585	Scraper Tube, 58-1/2"	
18	64-113	3/4" Flat Washer			★ 4850-1-705	Scraper Tube, 70-1/2"	
19	63-132	1-3/4NC Slotted Hex Nut					
20	64-109	5/8" Lock Washer					
21	64-112	3/4" Lock Washer					
★ Refer to Placement Pages for Unit Spacing							



DISC GANG ASSEMBLY

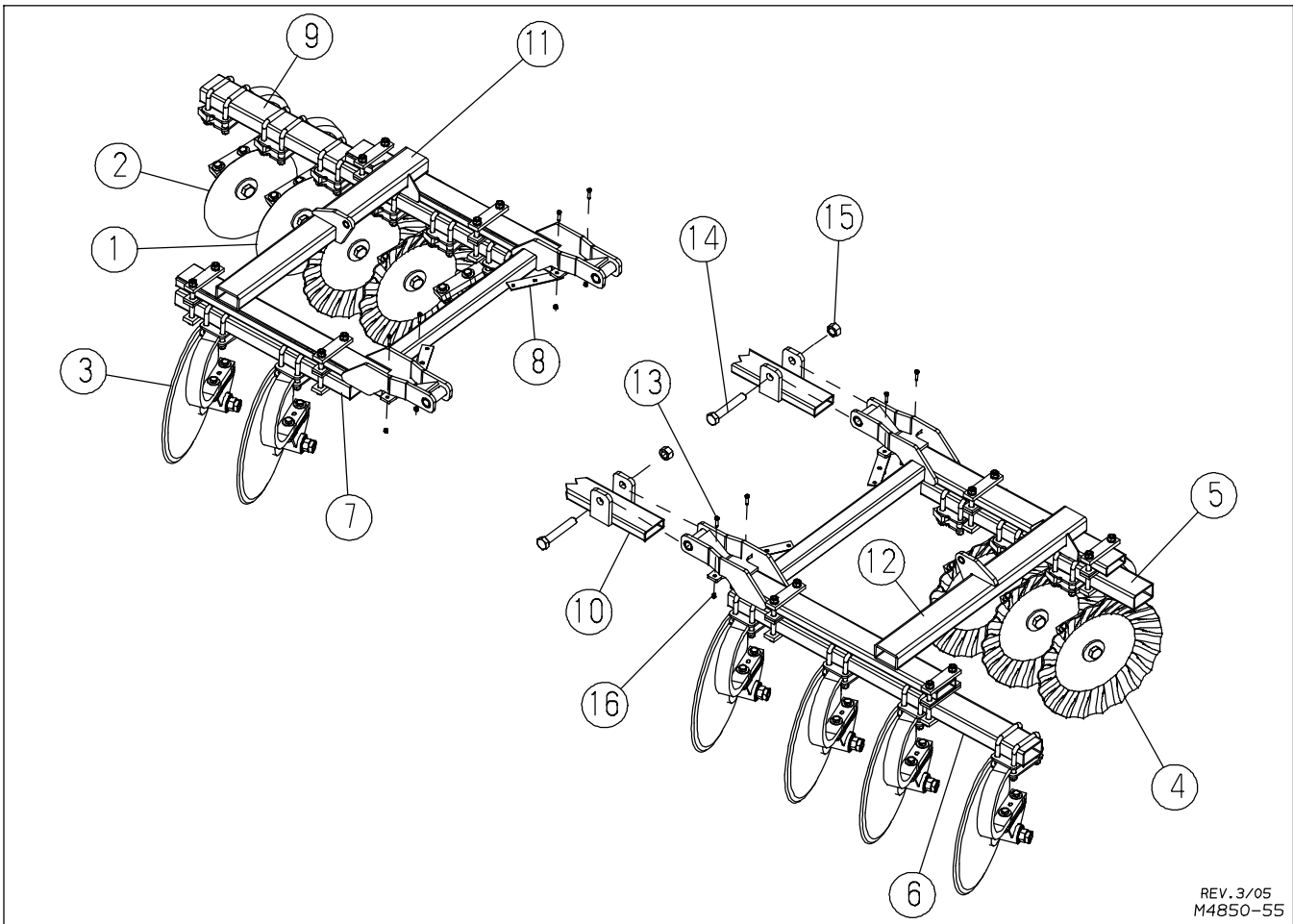
FOR MODELS - 12', 15' & 18', 21' CENTER (21' SHOWN)

APR10

Item	Part Number	Part Description	Qty.
1	21-1017	3 x 10 Hydraulic Cylinder	2
2	30-238	Disc Blade 24" 6 Ga. Shallow Concavity	Spec.
3	30-247	Disc Blade 24" 6 Ga. Turbo	Spec.
	30-225	Disc Blade 20" (Note: Taper Down Blades not Shown) - 12' & 15'	Spec.
	30-235	Disc Blade 18" (Note: Taper Down Blades not Shown) - 12' & 15'	Spec.
4	31-209A	C-Arm Shank	Spec.
5	31-210A	Rock Flex Bearing Arm	
6	42-138	Seal	Spec.
7	4850-0-14	Bushing	Spec.
8	4850-0-15A	Clamp Plate (1/2" thick)	2
9	4850-0-26	Mounting Bracket	Spec.
10	4850-0-31	Pin	2
11	4850-0-42	Gang Beam (Front & Rear) 126" - 18' & 21'	2
	4850-0-36	Gang Beam (Front) 155" - 15'	1
	4850-0-37	Gang Beam (Rear) 170" - 15'	1
	4850-0-47	Gang Beam (Front) 120" - 12'	1
	4850-0-48	Gang Beam (Rear) 140" - 12'	1
12	4850-0-53	Spacer - 18' & 21'	Spec.
13	4850-1043-0	Rear Disc Frame - 18' & 21'	1
	4850-2043-0	Rear Disc Frame - 12' & 15'	1
14	4850-1050-0	Wing Stop Weldment	2
15	4850-2042-0	Parallel Link Rocker	1
16	4850-2044-0	Lug	2
17	4850-5037-1A	Spacer Plate	2
18	4850-5046-3	Spacer (3/4")	2
19	4850-5046-4	Spacer (1/2")	Spec.
20	4850-5051-5	Disc Washer Casting	Spec.
21	4850-5051-6	Cast Backup Plate	Spec.
22	4850-5051-7	Cast Hub Sub-Assembly	Spec.
23	40-170	Triple Lip Seal Ball Bearing (in 4850-5051-7)	Spec.
24	4850-5051-3	Spacer (in 4850-5051-7)	Spec.
25	53-103	Wear Sleeve	Spec.
26	5630-0-33	Decal & SMV Mount	1
27	5630-0-34	SMV Bracket	1
28	61-122	U-Bolt, 3/4"DIA x 5-1/16"W x 6-1/8"L	Spec.

Item	Part Number	Part Description	Qty.
29	62-151	1/2NC x 3" GD5 Cap Screw	4
30	62-167	5/8NC x 1-3/4" GD5 Cap Screw	4
31	62-197	3/4NC x 3" GD5 Cap Screw	Spec.
32	62-201	3/4NC x 4" GD5 Ca Screw	Spec.
33	62-203	3/4NC x 4-1/2" GD5 Cap Screw - 18' & 21'	Spec.
34	62-220	3/4NC x 8-1/2" GD5 Cap Screw	16
35	62-240	1NC x 3-1/2" GD5 Cap Screw	2
36	62-275	1-1/4NC x 7-1/2" GD5 Bolt	Spec.
37	62-420	1/2NC x 1-1/4" GD5 Cap Screw	4
38	62-493	3/8NC x 3/4" GD5 Cap Screw	2
39	62-507	1/4NC x 3/4" GD5 Cap Screw	3
40	63-100	1/4NC Hex Nut	3
41	63-102	3/8NC Hex Nut	2
42	63-106	1/2NC Hex Nut	4
43	63-108	1/2NC Nylon-Top Lock Nut	4
44	63-109	5/8NC Hex Nut	4
45	63-112	3/4NC Hex Nut	Spec.
46	63-119	1NC GDB Oval Lock Nut	Spec.
47	63-162	3/4NC Nylon-Top Lock Nut	Spec.
48	63-245	1-1/4NC GDB Jam Nut	2
49	64-100	1/4" STD. Lock Washer	3
50	64-101	1/4" STD. Flat Washer	3
51	64-103	3/8" STD. Lock Washer	2
52	64-107	1/2" STD. Lock Washer	4
53	64-109	5/8" STD. Lock Washer	4
54	64-112	3/4" STD. Lock Washer	36
55	64-217	Heat Tread 3/4" Flat Washer	6
56	65-101	1/8" STD. Zerk	4
57	65-114	1/4" Thread Cutting Zerk	4
58	70-219	Pitch Control Link Assy	2
59	70-220	Tube Assembly	2
60	70-221	Screw Assembly - LH	2
61	70-222	Screw Assembly - RH	2
62	74-487	SMV Sign	1
63	79-395	Lamp - Single Red Stop/Tail	2
64	4850-5056-0	Casting Shield Weldment	Spec.

REAR DISC WINGS



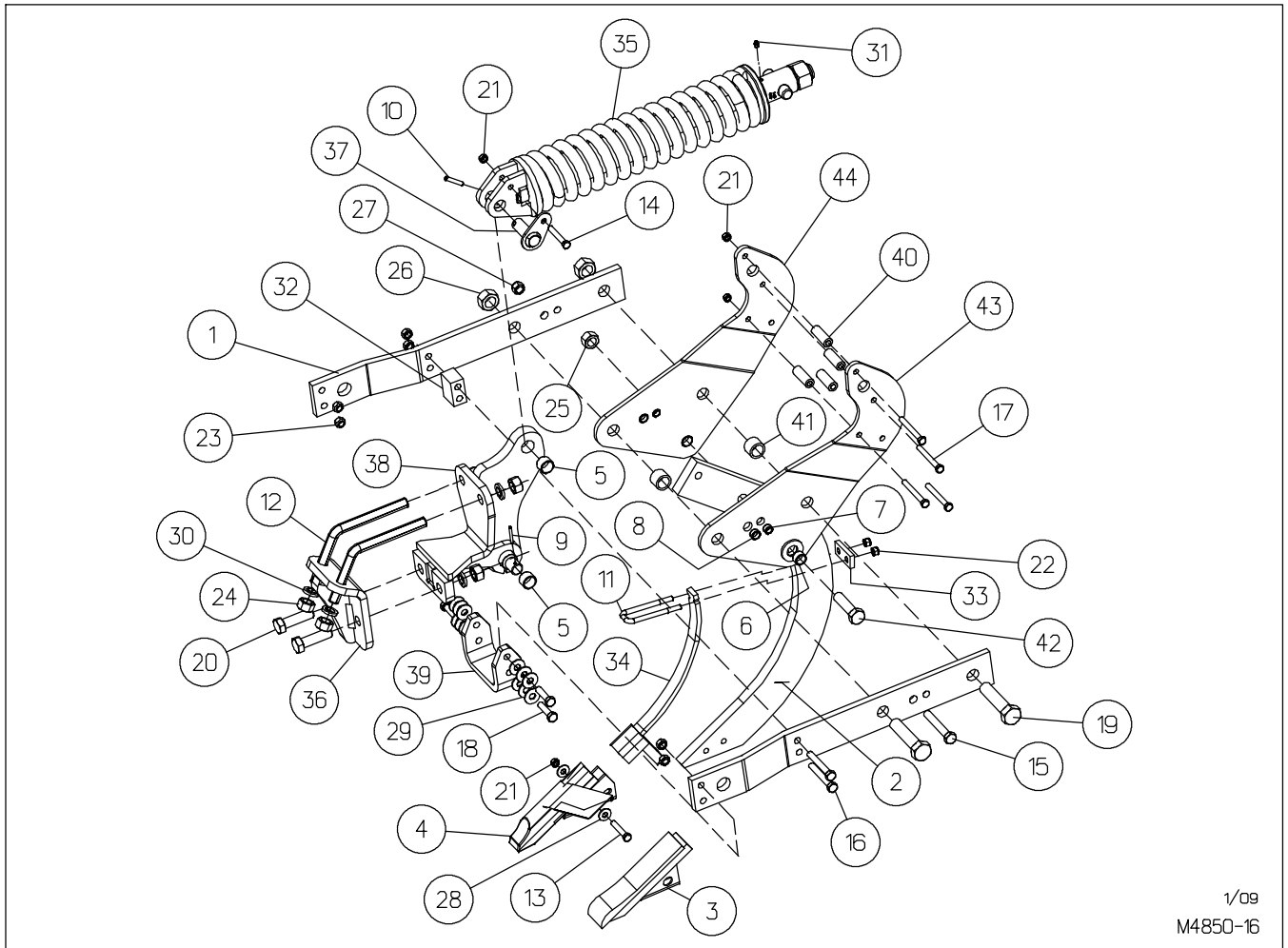
REV. 3/05
M4850-55

FOR MODELS - 18' & 21'

APR10

Item	Part Number	Part Description	Qty.
1	30-225	20" Disc Blade	Spec.
2	30-235	18" Disc Blade	Spec.
3	30-238	24" Conservation Blade	Spec.
4	30-247	24" Turbo Blade	Spec.
5	4850-0-43	Gang Beam 51.50" - 21'	1
	4850-0-45	Gang Beam 37.22" - 18'	1
6	4850-0-44	Gang Beam 63.00" - 21'	1
	4850-0-43	Gang Beam 45.50" - 18'	1
7	4850-0-45	Gang Beam 37.22"	1
8	4850-0-46	Shim	8
9	4850-0-54	Gang Beam 68.50" - 21'	1
	4850-0-56	Gang Beam 58.19" - 18'	1
10	4850-1043-0	Rear Disc Frame Weldment	1
11	4850-1044-0	Right Wing Disc Frame Weldment	1
12	4850-1045-0	Left Wing Disc Frame Weldment	1
13	62-111	3/8NC x 1-1/2" GD5 Cap Scre	8
14	62-278	1-1/4NC x 8" GD5 Hex Machine Bolt	2
15	63-126	1-1/4NC Oval Lock Nut	2
16	63-134	3/8NC Nylon-Top Lock Nut	8

SUBSOIL SHANK ASSEMBLY



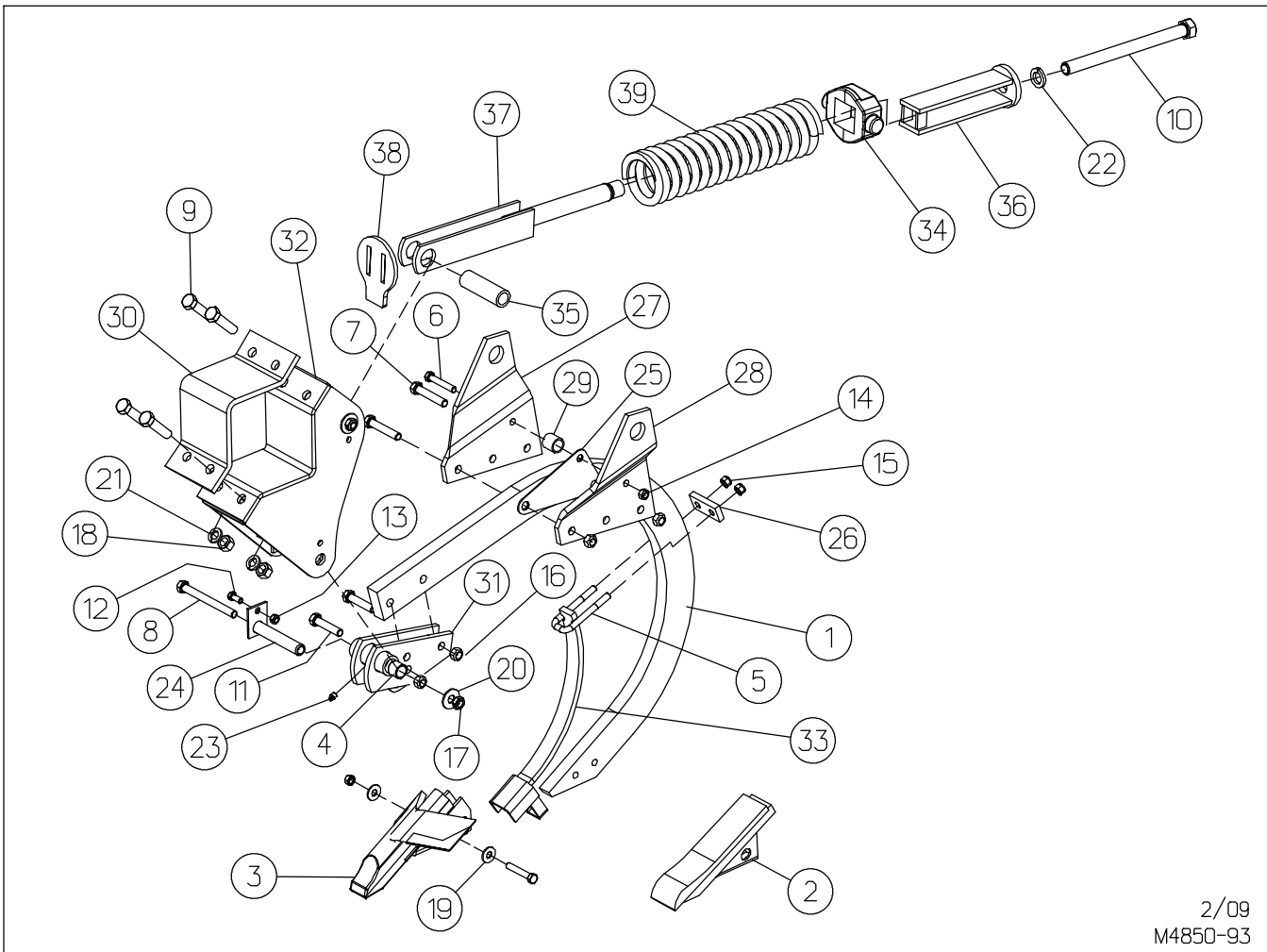
1/09
M4850-16

FOR MODELS - ALL

MAY09

Item	Part Number	Part Description	Qty.	Item	Part Number	Part Description	Qty.
1	31-190	Shank Arm	2	23	63-110	5/8NC Oval Lock Nut	6
2	31-206P	Subsoil Shank	1	24	63-117	1NC Hex Nut	6
3	33-207	Subsoil Point 2-1/2 x 13-3/4	1	25	63-119	1NC Oval Lock Nut	1
4	33-209A	7" Wing Cap Subsoil Point	1	26	63-126	1-1/4NC Oval Lock Nut	2
5	53-101	Wear Sleeve 1.50od x 1.28id x1.00	3	27	63-162	3/4NC Nylon-Top Lock Nut	1
6	53-103	Wear Sleeve 1.25od x 1.02id x .72	2	28	64-108	1/2" Flat Washer	2
7	53-119	Wear Sleeve .875od x .635 x .50	2	29	64-110	5/8" Flat Washer	12
8	53-136	Wear Sleeve 1.00od x .765id x .50	2	30	64-118	1" Lock Washer	6
9	60-606	1/4" x 2" Roll Pin	2	31	65-110	1/8" Straight Grease Zerk	1
10	60-616	3/8" Dia X 2-1/4" Roll Pin	1	32	4808-26-3	Spacer Block	1
11	61-296	U-Bolt, 1/2"D x 1.31W x 5.75L	1	33	4850-0-66	Bolt Plate	1
12	61-300	L-Bolt 1"DIA	2	34	4850-136-0	Wearbar Weldment	1
13	62-151	1/2NC x 3" Gd5 Cap Screw	1	35	4850-90-0B	Spring Assembly	1
14	62-154	1/2NC x 3-1/2" Gd5 Cap Screw	1	36	4850-9096-0	Clamp Weldment	1
15	62-205	3/4NC x 5" Gd5 Cap Screw	1	37	4850-92-0	Pivot Lock	1
16	62-339	5/8NC x 4-1/2" Gd5 Cap Screw	2	38	4881-9090-0	Shank Mount	1
17	62-351	1/2NC x 4-1/2" Gd5 Cap Screw	4	39	4885-76-1	Doubler	1
18	62-441	5/8NC x 2-1/2" Gd5 Cap Screw	4	40	4885-80-1	Spacer	4
19	62-742	1-1/4NC x 5-1/2" Gd5 Bolt	2	41	4885-80-2	Front Spacer Tube	2
20	62-817	1NC x 3-1/2" Gd8 Cap Screw	2	42	4885-80-3	1NC x 4" Special Bolt	1
21	63-107	1/2NC Oval Lock Nut	6	43	4885-87-0B	Left Trunnion Bracket Assembly	1
22	63-108	1/2NC Nylon-Top Lock Nut	2	44	4885-88-0B	Right Trunnion Bracket Assembly	1

CHISEL SHANK ASSEMBLY



2/09
M4850-93

FOR MODELS - ALL

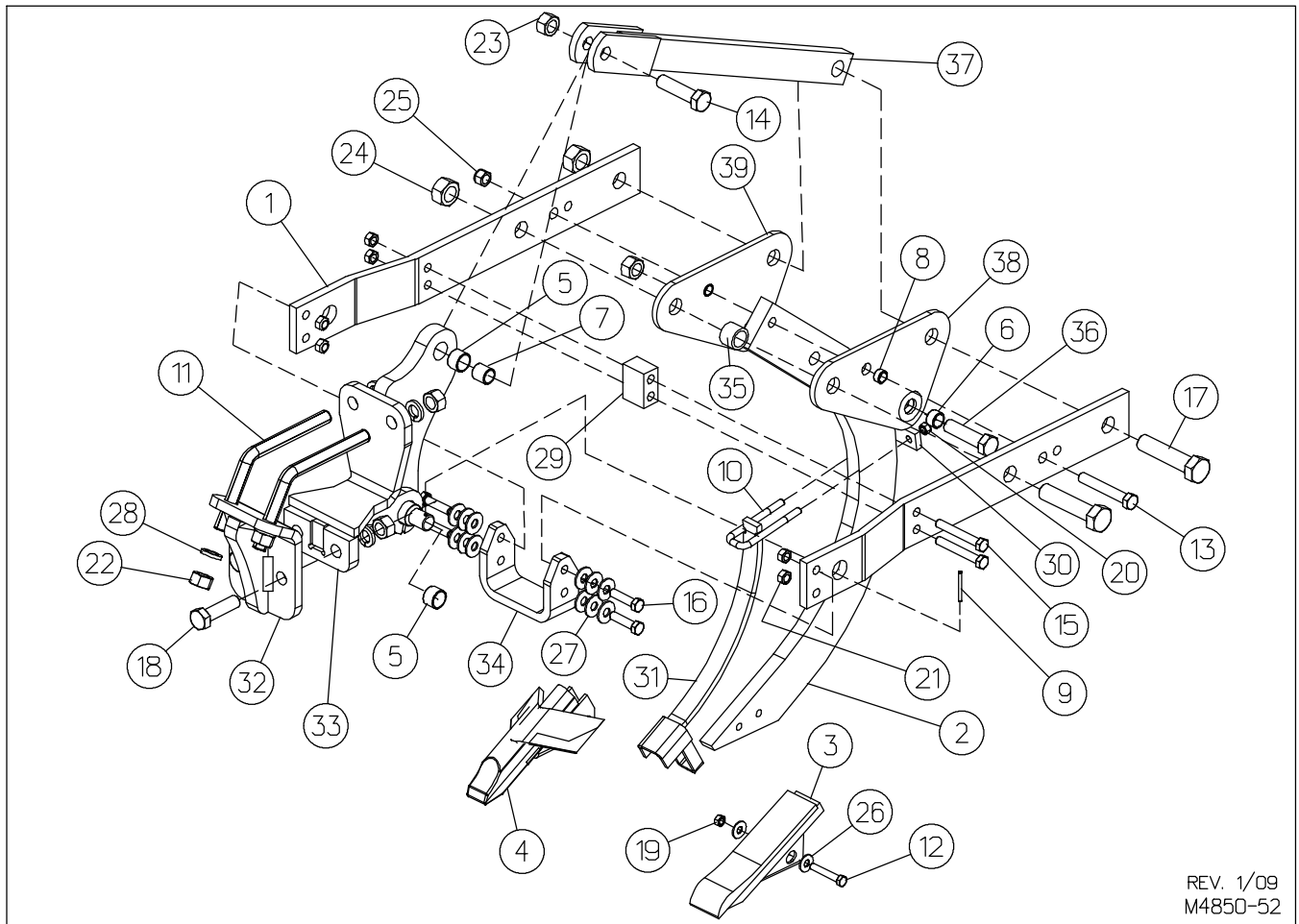
MAY09

Item	Part Number	Part Description	Qty.
1	31-207	Chisel Shank	1
2	33-207	Subsoil Point	1
3	33-209A	7" Capped Point	1
4	53-102	Wear Sleeve	2
5	★61-299	U-Bolt .50"D x 1.31"W x 4.75"L	1
6	62-151	1/2NC x 3" Gd5 Cap Screw	2
7	62-176	5/8NC x 3-1/2" Gd5 Cap Screw	2
8	62-186	5/8NC x 6-1/2" Cap Screw	2
9	62-197	3/4NC x 3" Gd5 Cap Screw	4
10	62-408	1NC x 13" Gd5 Machine Bolt	1
11	62-409	5/8NC x 3" Gd5 Cap Screw	2
12	62-508	7/16NC x 1" Gd5 Cap Screw	2
13	63-105	7/16NC Lock Nut	2
14	63-107	1/2NC Lock Nut	2
15	★63-108	1/2NC Nylon-Top Lock Nut	2
16	63-110	5/8NC Lock Nut	4
17	63-111	5/8NC Hex Locking Jam Nut	2
18	63-112	3/4NC Hex Nut	4
19	64-108	1/2" STD. Flat Washer	2
20	64-110	5/8" STD. Flat Washer	2

Item	Part Number	Part Description	Qty.
21	64-112	3/4" STD. Lock Washer	4
22	64-118	1" STD. Lock Washer	1
23	65-101	1/8" STD. Zerk	1
24	3611-35-0A	Pivot Tube Weldment	2
25	4800-30-2	Shim	1
26	★4850-0-66	Bolt Plate	1
27	4850-30-1	Right Trunnion Bracket	1
28	4850-30-2	Left Trunnion Bracket	1
29	4850-30-3	Bushing	1
30	4850-30-4	Clamp	1
31	4850-31-0A	Shank Pivot Weldment	1
32	4850-33-0	Shank Clamp Weldment	1
33	★4850-40-0	Wearbar Weldment (Chisel)	1
34	3611-21-1	Spring Trunnion	1
35	3611-21-4	Pivot Tube	1
36	3611-28-0	Spring Slide Weldment	1
37	3611-39-0	Spring Guide Weldment	1
38	4850-21-3	Spring Cap	1
39	76-160	Spring	1

★ Option

SOLID SUBSOIL SHANK ASSEMBLY



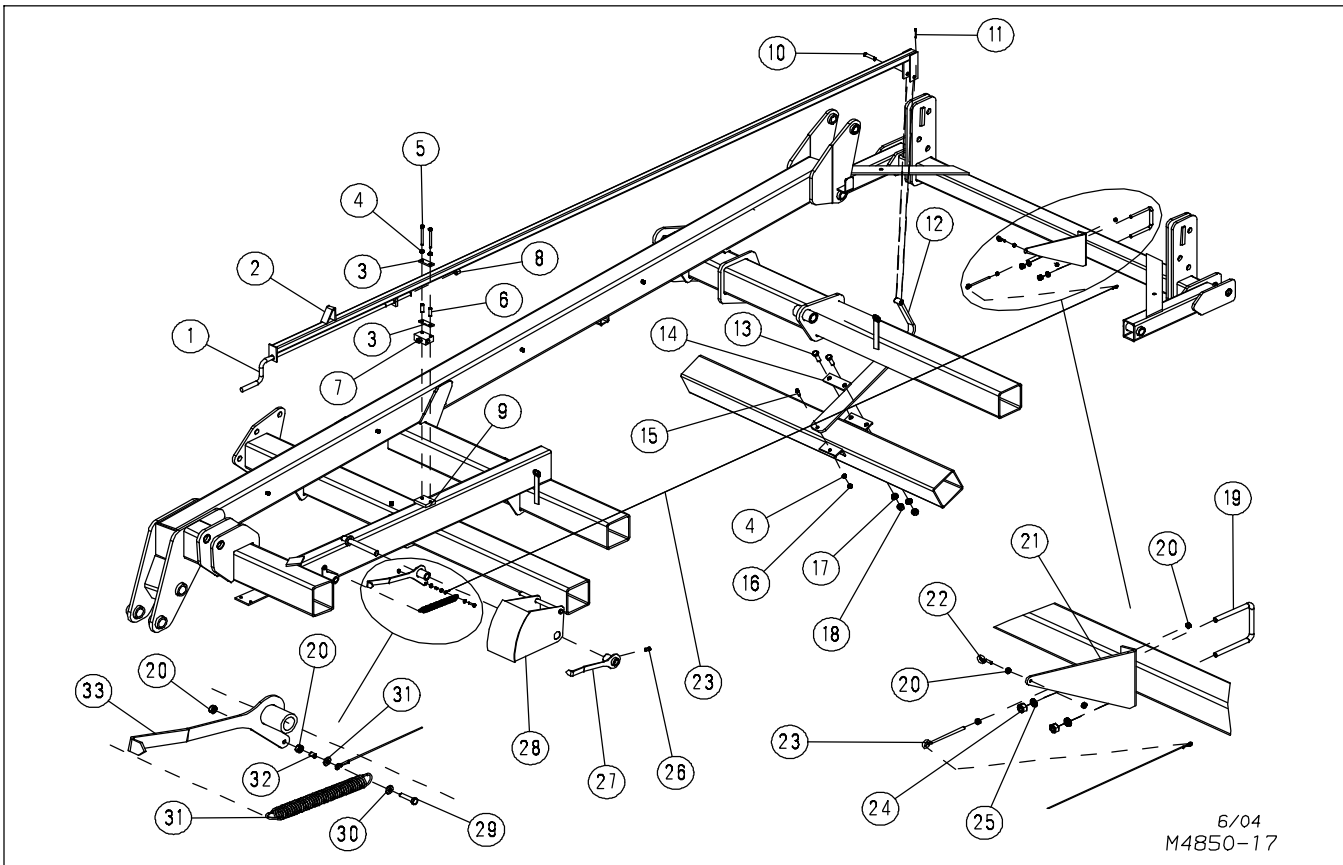
REV. 1/09
M4850-52

FOR MODELS - ALL

APR10

Item	Part Number	Part Description	Qty.	Item	Part Number	Part Description	Qty.
1	31-190	Shank Arm	2	21	63-110	5/8NC Oval Lock Nut	6
2	31-206P	Subsoil Shank	1	22	63-117	1NC Hex Nut	6
3	33-207	Subsoil Point 2-1/2 x 13-3/4	1	23	63-119	1NC Oval Lock Nut	2
4	33-209A	7" Wing Capped Subsoil Point	1	24	63-126	1-1/4NC Oval Lock Nut	2
5	53-101	Wear Sleeve 1.50odx1.28kd x1.00	3	25	63-162	3/4NC Nylon-Top Lock Nut	1
6	53-103	Wear Sleeve 1.25od x1.02idx.72	1	26	64-108	1/2" Flat Washer	2
7	53-117	Wear Sleeve 1.25odx1.017x1.25	1	27	64-110	5/8" Flat Washer	12
8	53-136	Wear Sleeve 1.00odx.765idx.50	1	28	64-118	1" Lock Washer	6
9	60-608	1/4" x 2-1/2" Roll Pin	2	29	4808-26-3	Spacer Block	1
10	61-296	U-Bolt, 1/2"D x 1.31W x 5.75L	1	30	4850-0-66	Bolt Plate	1
11	61-300	L-Bolt 1"DIA	2	31	4850-136-0	Wearbar Weldment	1
12	62-151	1/2NC x 3" Gd5 Cap Screw	1	32	4850-9096-0	Clamp Weldment	1
13	62-205	3/4NC x 5" Gd5 Cap Screw	1	33	4881-9090-0	Shank Mount	1
14	62-242	1NC x 4" GD5 Cap Screw	1	34	4885-76-1	Doubler	1
15	62-339	5/8NC x 4-1/2" Gd5 Cap Screw	2	35	4885-80-2	Front Spacer Tube	1
16	62-441	5/8NC x 2-1/2" Gd5 Cap Screw	4	36	4885-80-3	1NC x 4" Special Bolt	1
17	62-742	1-1/4NC x 5-1/2" Gd5 Bolt	2	37	4885-93-0	Link Weldment	1
18	62-817	1NC x 3-1/2" Gd8 Cap Screw	2	38	4885-97-0	Left Shear Plate Assembly	1
19	63-107	1/2NC Oval Lock Nut	1	39	4885-98-0	Right Shear Plate Assembly	1
20	63-108	1/2NC Nylon-Top Lock Nut	2				

DEPTH STOP LINKAGE ASSEMBLY

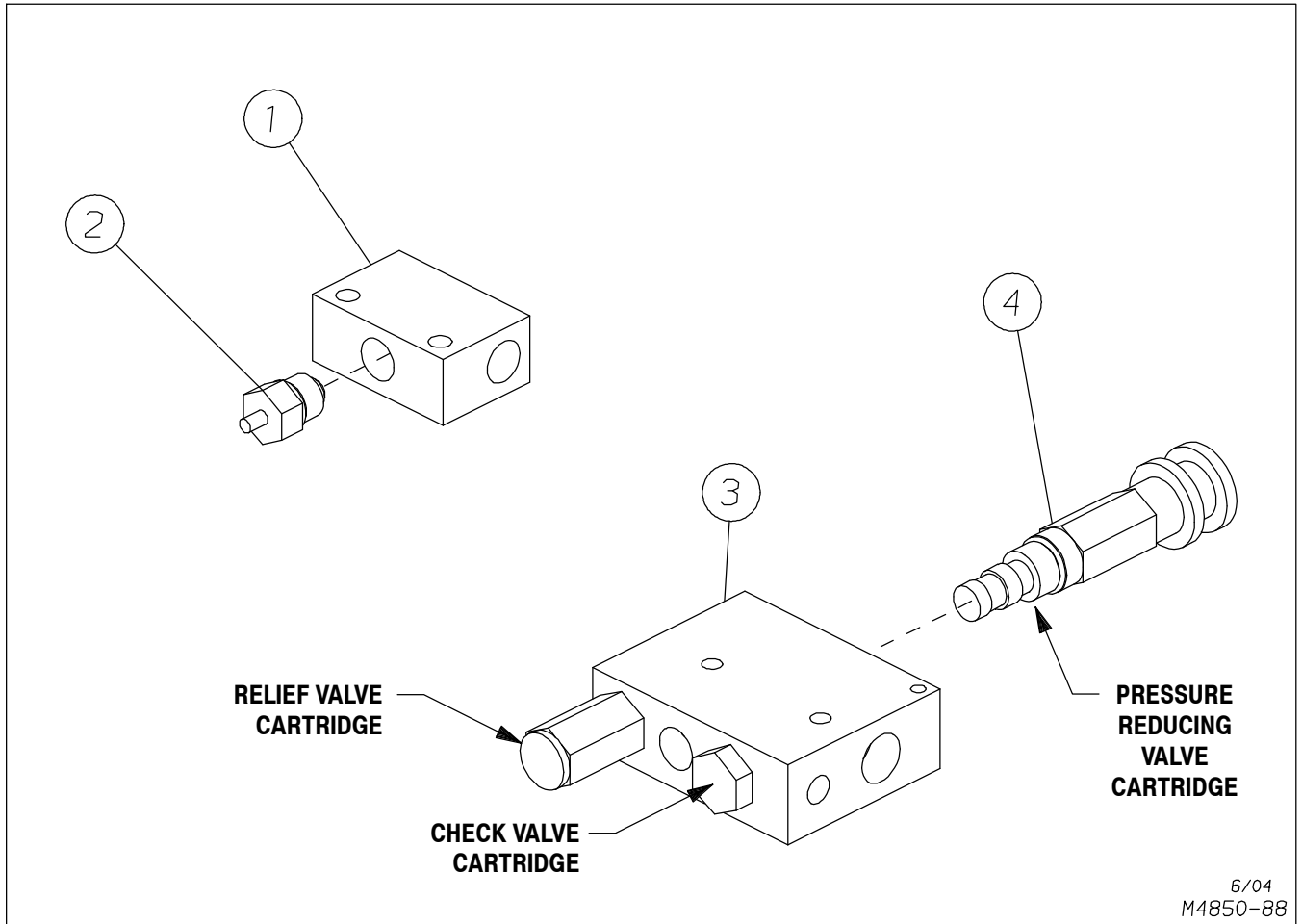


FOR MODELS - ALL

JUN04

Item	Part Number	Part Description	Qty.
1	4850-0-19	Crank	1
2	4850-29-0	Depth Link Weldment	1
3	3112-69-2	Bolt Strap	2
4	64-103	3/8" STD. Lock Washer	3
5	62-379	3/8NC x 4" GD5 Cap Screw	2
6	3112-69-1	Spacer	2
7	25-2530	Remote Depth Valve	1
8	25-364	3/4" Cap Nut	1
9		Center Front to Rear Frame Beam	
10	60-268	1/2" x 2-1/2" Clevis Pin	1
11	60-725	5/32" x 1-1/2" Cotter Pin	1
12	4850-28-0	Depth Spring	1
13	62-169	5/8NC x 2" Gd5 Cap Screw	2
14	4850-0-24	Bolt Plate	1
15	62-436	3/8NC x 1-1/4" Gd5 Cap Screw	1
16	63-102	3/8NC Hex Nut	1
17	64-109	5/8" Lock Washer	2
18	63-109	5/8NC Hex Nut	2
19	61-152	1/2" x 4-1/16" x 5-1/8" U-Bolt	1
20	63-100	1/4NC Hex Nut	4
21	4850-0-25	Rear Gauge Bracket	1
22	61-287	1/4" x 2" Eye-Bolt	1
23	72-135	6" Eye-Bolt & Cable Assembly	1
24	63-106	1/2NC Hex Nut	2
25	64-107	1/2" Lock Washer	2
26	62-332	1/2NC x 3/4" Square Head Set Screw	1
27	4850-46-0	Shank Pointer	1
28	4850-32-0	Gauge Weldment	1
29	62-422	1/4NC x 1-1/4" GD5 Cap Screw	1
30	64-101	1/2" Flat Washer	2
31	76-177	Extension Spring 1" OD x 6"	1
32	5030-79-22	Spacer	1
33	4850-37-0	Disc Pointer	1

LIMIT VALVE & PRESSURE REDUCING VALVE



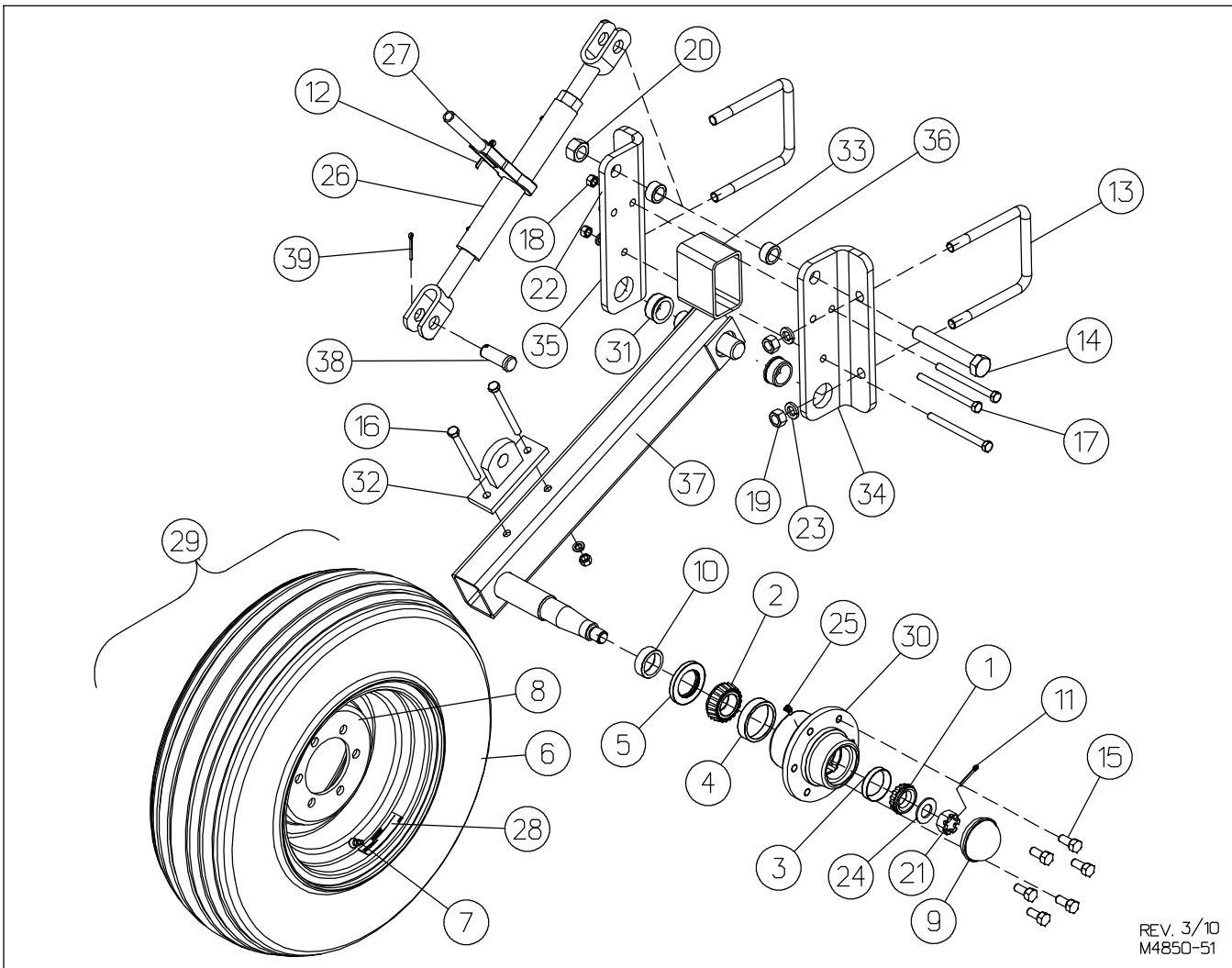
6/04
M4850-88

FOR MODELS - ALL

MAY08

Item	Part Number	Part Description	Qty.
1	25-2535	Limit Valve	1
2	25-2536	Cartridge Assembly (Includes O-Ring)	1
3	25-2522	Pressure Reducing Valve (Includes Item 4 below)	1
4	25-2528	Pressure Reducing Valve Cartridge	1
	25-2533	Seal Kit (for Check & Relief Cartridge)	
	25-2532	Seal Kit (for Pressure Reducing Valve Cartridge)	

GAUGE WHEEL ASSEMBLY



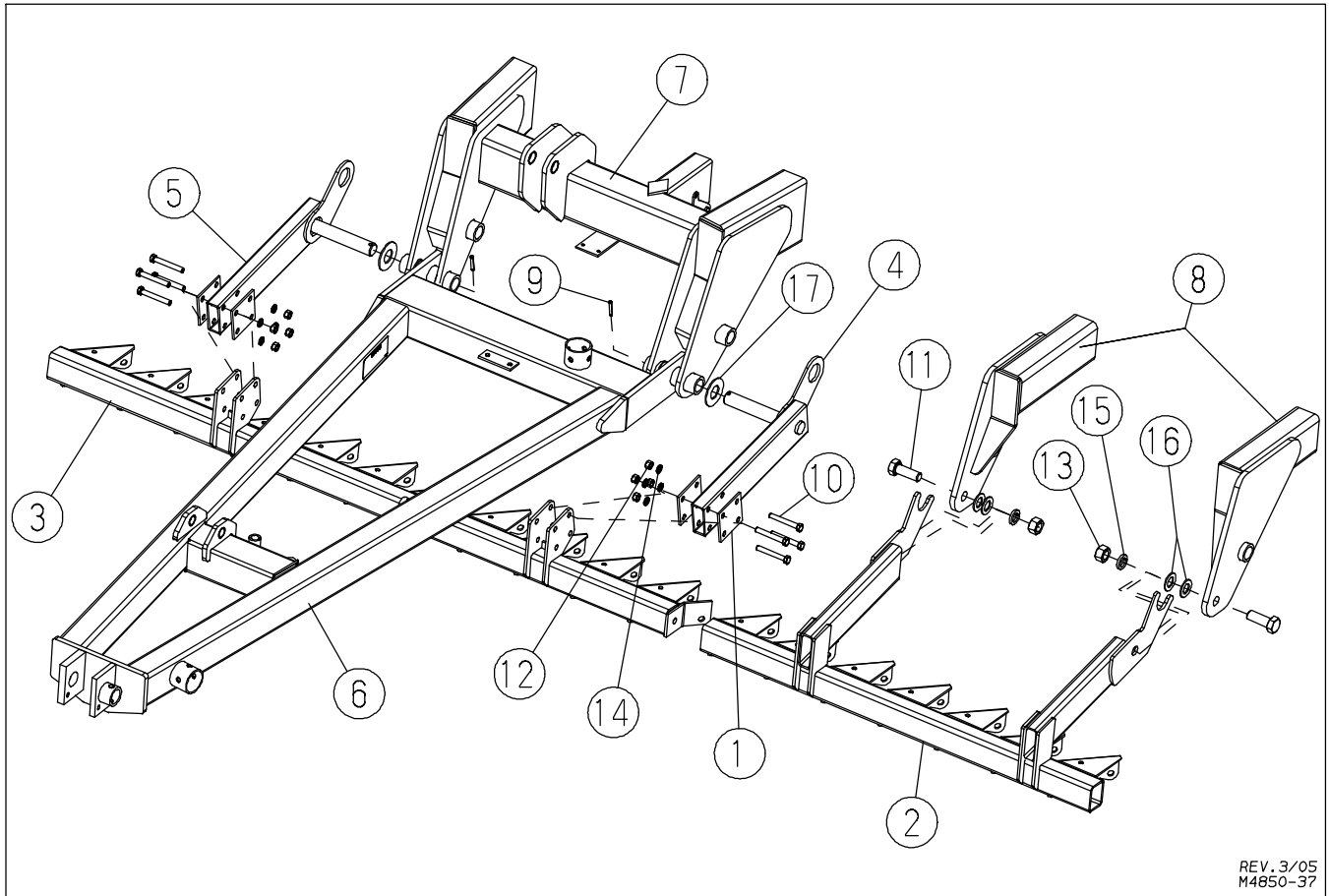
REV. 3/10
M4850-51

FOR MODELS - 18' & 21'

APR10

Item	Part Number	Part Description	Qty.	Item	Part Number	Part Description	Qty.
1	41-112	Cone	1	21	63-204	1NF Lock Nut	1
2	41-113	Cone	1	22	64-107	1/2NC Lock Washer	5
3	41-208	Cup	1	23	64-112	3/4" STD. Lock Washer	4
4	41-209	Cup	1	24	64-120	1" A325 Heat Treated Washer	1
5	42-108	Seal	1	25	65-122	1/4" x 65 Zerk	2
6	51-102	Tire 9.5L x 15 8-Ply	1	26	70-212	Ratchet Jack (Includes 27,28)	1
7	51-107	Valve Stem	1	27	70-212-1	Ratchet Jack Handle	1
8	52-102	Wheel 15 x 8 6-Bolt	1	28	74-109	Decal, Caution Wheel Bolt	1
9	52-302	Hub Cap	1	29	1000-95588-0	Wheel/Tire Assy (Includes 6,7,8)	1
10	53-105	Wear Bushing	1	30	1918-14-0A	Repair Hub (Includes 3,4,15,25)	1
11	60-702	3/16" DIA. x 1-1/2" Cotter Pin	1	31	2190-51-1	2-1/8"O.D. x 1" Bushing	2
12	60-708	Cotter Pin	1	32	4830-70-0	Lug Weldment	1
13	61-111	3/4" U-Bolt	2	33	4850-0-41	Spacer Tube	1
14	62-251	1NC x 6-1/2" Gd5 Bolt	1	34	4850-1075-0	Gauge Wheel Mount - Left	1
15	62-295	9/16NC x 1-1/8" Gd5 Wheel Bolt	6	35	4850-1076-0	Gauge Wheel Mount - Right	1
16	62-352	1/2NC x 5-1/2" Gd5 Cap Screw	2	36	9210-15-10	Spacer	2
17	62-395	1/2NC x 6" Gd5 Cap Screw	3	37	4850-1071-0	Gauge Wheel Weldment	1
18	63-106	1/2NC Hex Nut	5	38	60-200	1"DIA x 2-1/2" Clevis Pin	1
19	63-112	3/4NC Hex Nut	4	39	60-703	3/16" DIA x 1-3/4" Cotter Pin	1
20	63-119	1NC Lock Nut	1				

RESIDUE MANAGER MOUNTING ARM ASSEMBLY



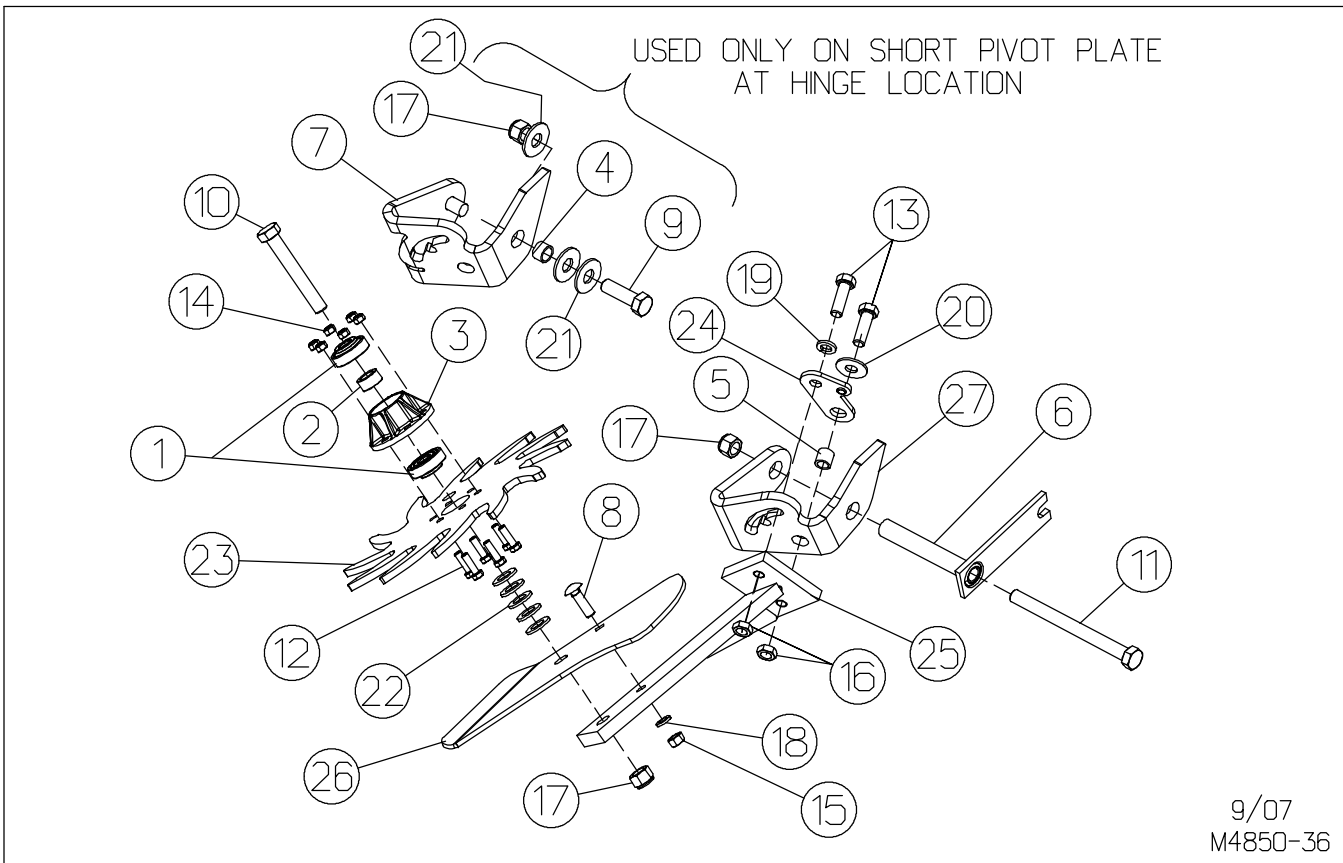
REV. 3/05
M4850-37

FOR MODELS - 18' & 21'

MAR05

Item	Part Number	Part Description	Qty.
1	4850-0-51	Spacer Plate	4
2	4850-1011-0	Residue Manager Wing Assembly Left (Shown) - 21'	1
	4850-1013-0	Residue Manager Wing Assembly Right - 21'	1
	4850-8014-0	Residue Manager Wing Assembly Right - 18'	1
	4850-8015-0	Residue Manager Wing Assembly Left - 18'	1
3	4850-1012-0	Center Residue Manager - 18' & 21'	1
	4850-2012-0	Center Residue Manager - 12'	1
	4850-5012-0	Center Residue Manager - 15'	1
4	4850-147-0	Mount Arm Weldment - Left	1
5	4850-148-0	Mount Arm Weldment - Right	1
6		Tongue Weldment	1
7		Center Frame	1
8		Left Wing Frame - 18' & 21'	1
9	60-616	3/8" DIA. x 2-1/4" Roll Pin	2
10	62-339	5/8NC x 4-1/2" GD5 Cap Screw	8
11	62-678	1-1/4NC x 3-1/2" GD5 Cap Screw - 18' & 21'	2
12	63-109	5/8NC Hex Nut	8
13	63-123	1-1/4NC Hex Nut - 18' & 21'	2
14	64-109	5/8" STD. Lock Washer	8
15	64-125	1-1/4" STD. Lock Washer - 18' & 21'	2
16	64-127	1-1/4" SAE Flat Washer - 18' & 21'	4
17	64-131	1-3/4" STD. Flat Washer	2

STARWHEEL ARM ASSEMBLY



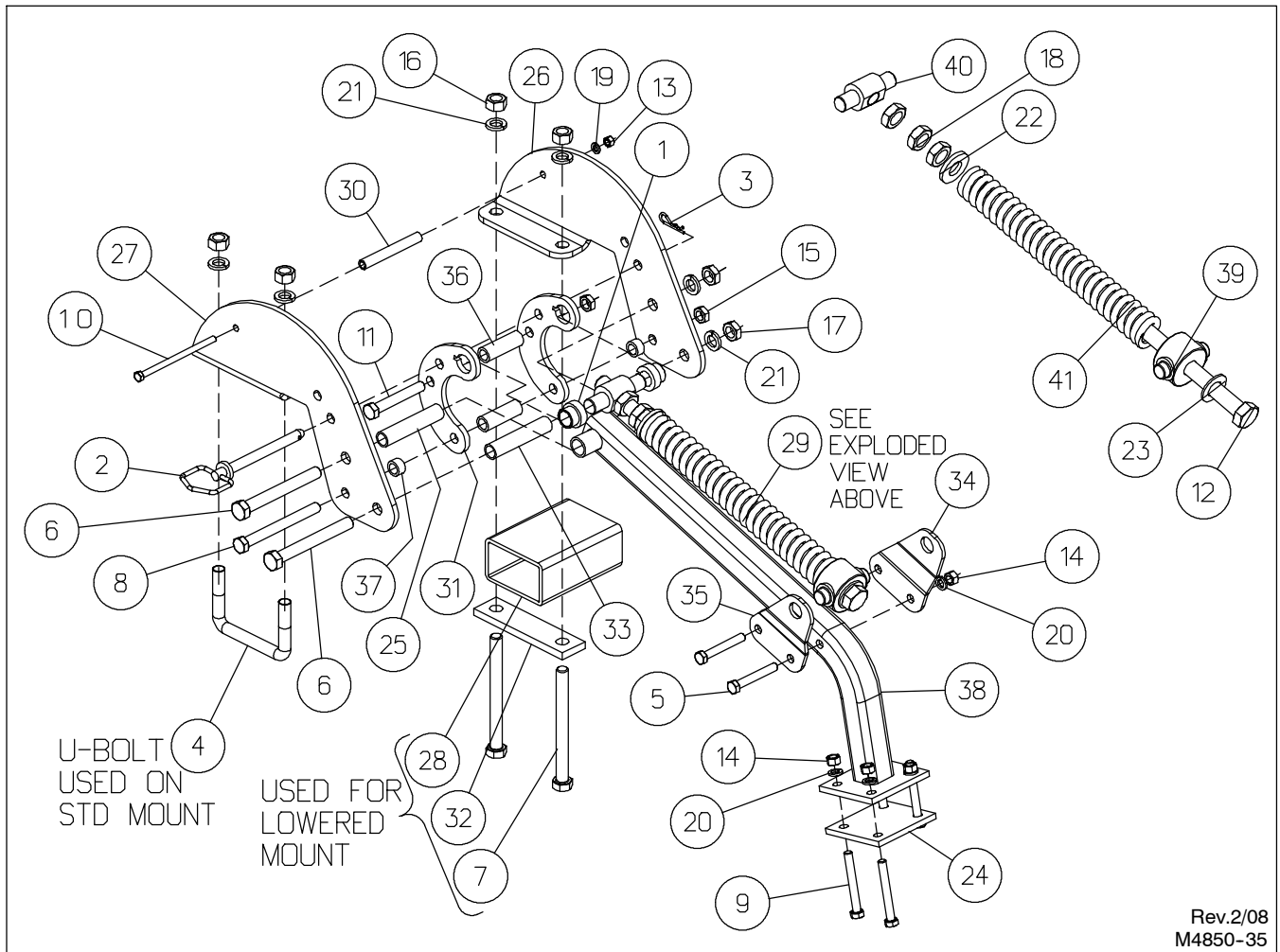
9/07
M4850-36

FOR MODELS - ALL

APR08

Item	Part Number	Part Description	Qty.
1	40-155	Bearing	2
2	4700-42-4	Spacer	1
3	4700-42-1A	Hub Casting	1
4	4850-0-60	Bushing	1
5	4850-157-6	Bushing	1
6	4850-175-0	Pivot Pin	1
7	4850-176-0	Pivot Clevis Weldment	1
8	62-139	1/2NC x 1-3/4" GD5 Cap Screw	1
9	62-195	3/4NC x 2-1/2" GD5 Cap Screw	1
10	62-205	3/4NC x 5" GD5 Cap Screw	1
11	62-220	3/4NC x 8-1/2" GD5 Cap Screw	1
12	62-436	3/8NC x 1-1/4" GD5 Cap Screw	6
13	62-707	5/8NC x 2" GD5 Cap Screw	2
14	63-103	3/8NC Lock Nut	6
15	63-106	1/2NC Hex Nut	1
16	63-154	5/8NC Hex Jam Nut	2
17	63-162	3/4NC Nylon-Top Lock Nut	3
18	64-107	1/2" STD. Lock Washer	1
19	64-109	5/8" STD. Lock Washer	1
20	64-110	5/8" STD. Flat Washer	1
21	64-113	3/4" STD. Flat Washer	3
22	64-114	3/4" SAE Flat Washer	5
23	4850-0-18	Star Wheel	1
24	4850-154-0	Pivot Plate Assembly	1
25	4850-155-0	Arm Weldment	1
26	4850-157-1	Stripper	1
27	4850-157-2A	Pivot Clevis	1

REEL CARRIER ARM



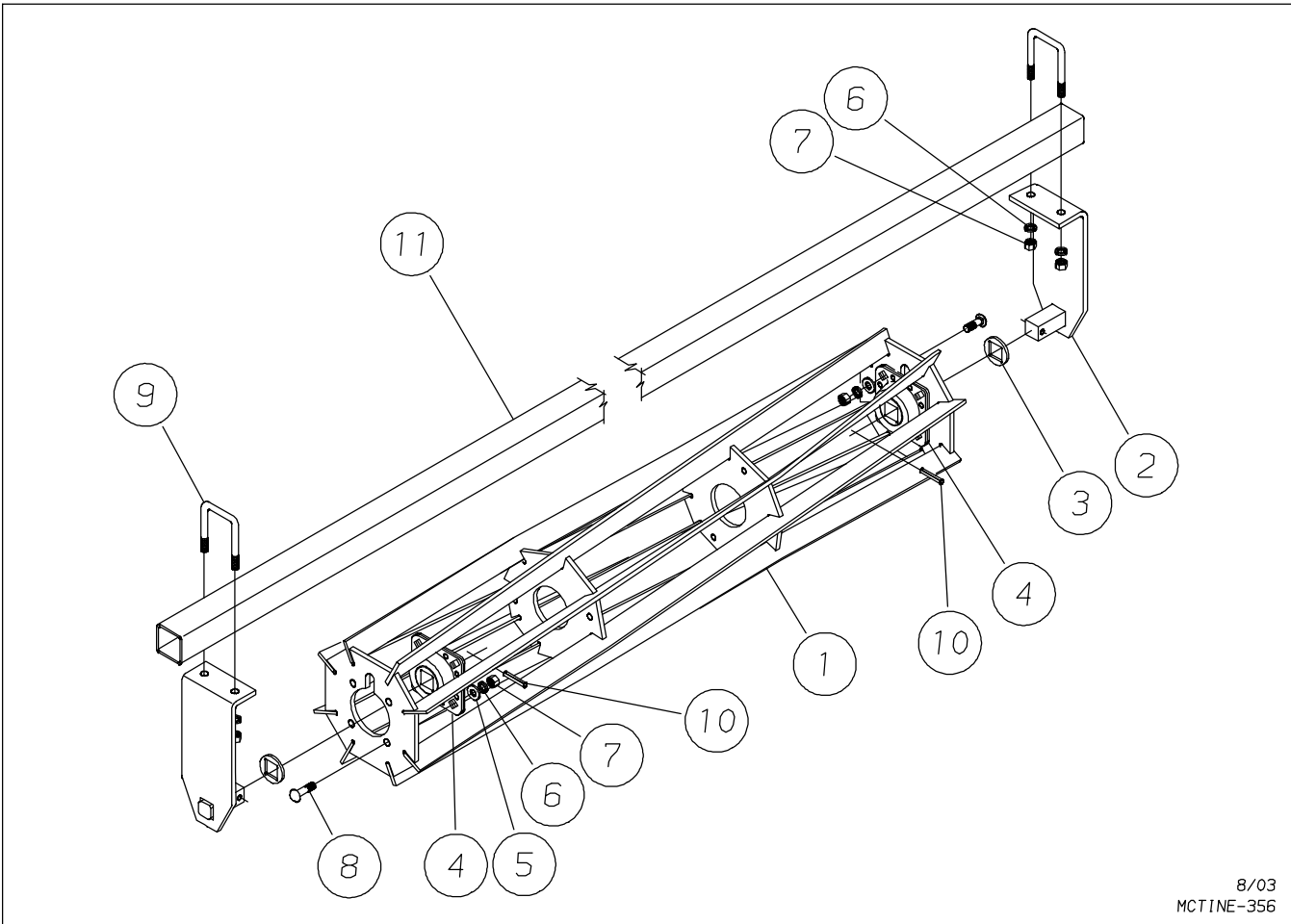
Rev.2/08
M4850-35

FOR MODELS - ALL

APR08

Item	Part Number	Part Description	Qty.	Item	Part Number	Part Description	Qty.
1	53-169	Flanged Wear Sleeve	2	22	64-137	Special Washer	1
2	60-404	5/8" x 6" Hitch Pin	1	23	64-155	1"SAE Flat Washer	1
3	60-716	Hair Pin	1	24	3124-205-3	Bolt Plate	1
4	61-143	U-Bolt 3/4D x 5"W x 3-1/2"L	1	25	4100-901-2	Bushing	1
5	62-154	1/2NC x 2" Gd5 Cap Screw	2	26	4850-0-34A	Right Bracket	1
6	62-212	3/4NC x 6-1/2" Gd5 Cap Screw	2	27	4850-0-35A	Left Bracket	1
7	62-301	3/4NC x 8" Cap Screw	2	28	4850-0-38	Spacer Tube	1
8	62-330	5/8NC x 6-1/2" Gd5 Cap Screw	1	29	4850-320-0	Spring Assembly	1
9	62-377	1/2NC x 4" Gd5 Cap Screw	4	30	4850-50-1A	Bushing	1
10	62-426	3/8NC x 6-1/2" Gd5 Cap Screw	1	31	4850-50-5	Link	2
11	62-578	5/8NC x 4-1/4" Cap Screw	1	32	4850-5046-4	Spacer	1
12	62-831	1NC x 23" GD5 Bolt	1	33	6200-305-1	Spacer	1
13	63-102	3/8NC Hex Nut	1	34	6200-305-2	Right Lug	1
14	63-106	1/2NC Hex Nut	6	35	6200-305-3	Left Lug	1
15	63-111	5/8NC Hex Lock Jam Nut	2	36	6200-310-10	Bushing	2
16	63-112	3/4NC HEx Nut	4	37	6200-310-11	Bushing	2
17	63-113	3/4NC Hex Jam Nut	2	38	6200-312-0	Carrier Arm Weldment	1
18	63-118	Hex Jam Nut	3	39	6200-320-2	Trunnion	1
19	64-103	3/8" STD. Lock Washer	1	40	4850-320-4	Trunnion	1
20	64-107	1/2" Lock Washer	6	41	76-238	Spring	1
21	64-112	3/4" STD. Lock Washer	6				

REEL ASSEMBLY



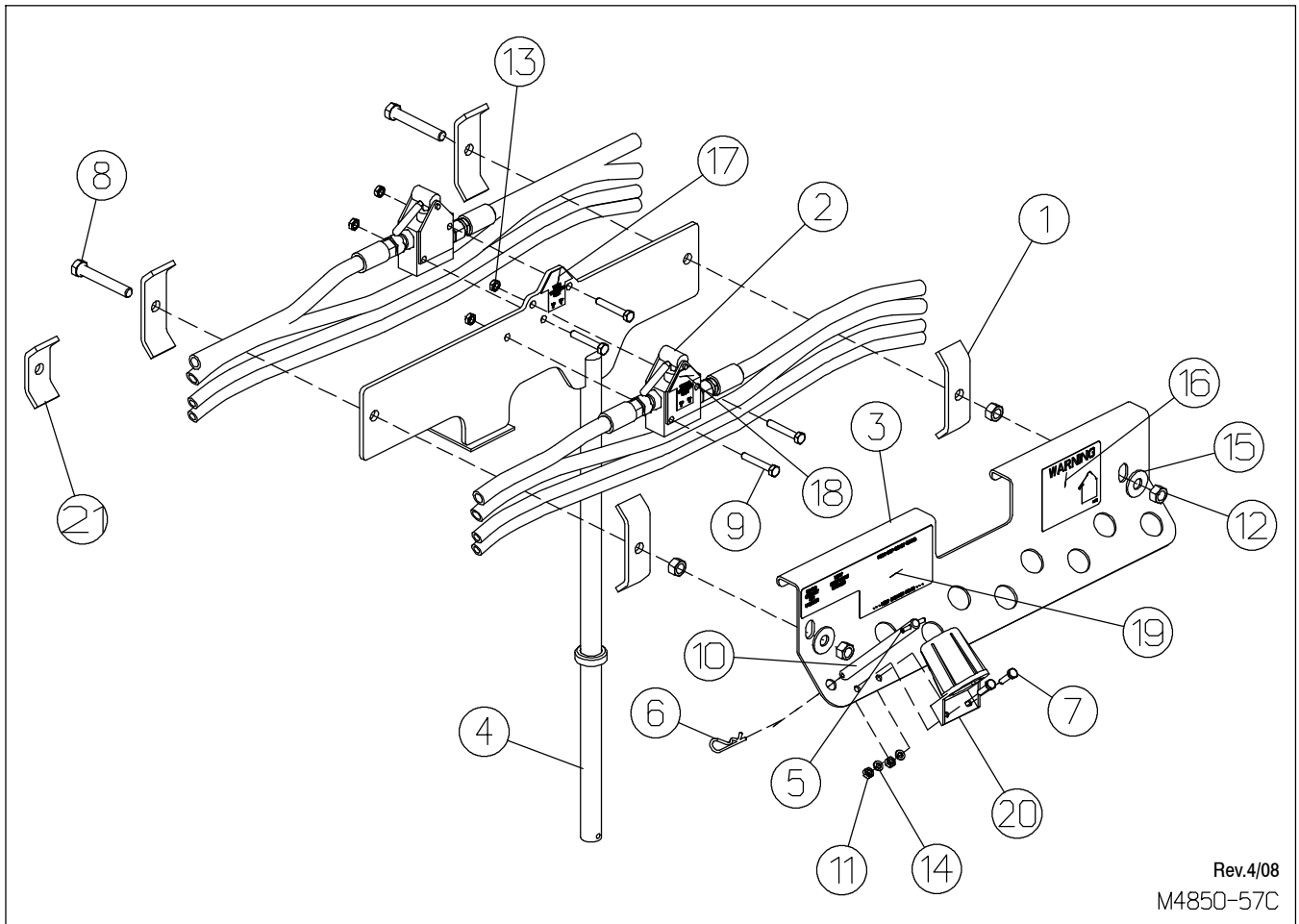
8/03
MCTINE-356

FOR MODELS -

AUG06

Item	Part Number	Part Description	Qty.
1	6200-326-0	Flat Reel Weldment - 42-3/4" Long	1
	6200-327-0	Flat Reel Weldment - 56-3/4" Long	1
	6200-328-0	Flat Reel Weldment - 70-3/4" Long	1
	6200-331-0	Round Reel Weldment - 42-3/4" Long	1
	6200-333-0	Round Reel Weldment - 56-3/4" Long	1
	6200-335-0	Round Reel Weldment - 70-3/4" Long	1
2	6200-336-0	Short Bearing Arm Weldment	2
3	4420-0-9	Roller Shaft Washer	2
4	40-128	Bearing	2
5	64-108	1/2" STD. Flat Washer	8
6	64-107	1/2" STD. Lock Washer	12
7	63-106	1/2NC Hex Nut	12
8	62-474	1/2NC x 1-1/2" GD5 Carriage Bolt	8
9	61-141	1/2" DIA. U-Bolt	2
10	60-615	3/8" DIA. x 2" Roll Pin	1
11	★ 6200-332-1	Mounting Beam - 57-3/4" Long	1
	6200-334-1	Mounting Beam - 71-3/4" Long	1
	6200-329-1	Mounting Beam - 103" Long	1
★ See placement pages for Mounting Beam lengths necessary for your implement.			

HOSE STAND ASSEMBLY



Rev.4/08
M4850-57C

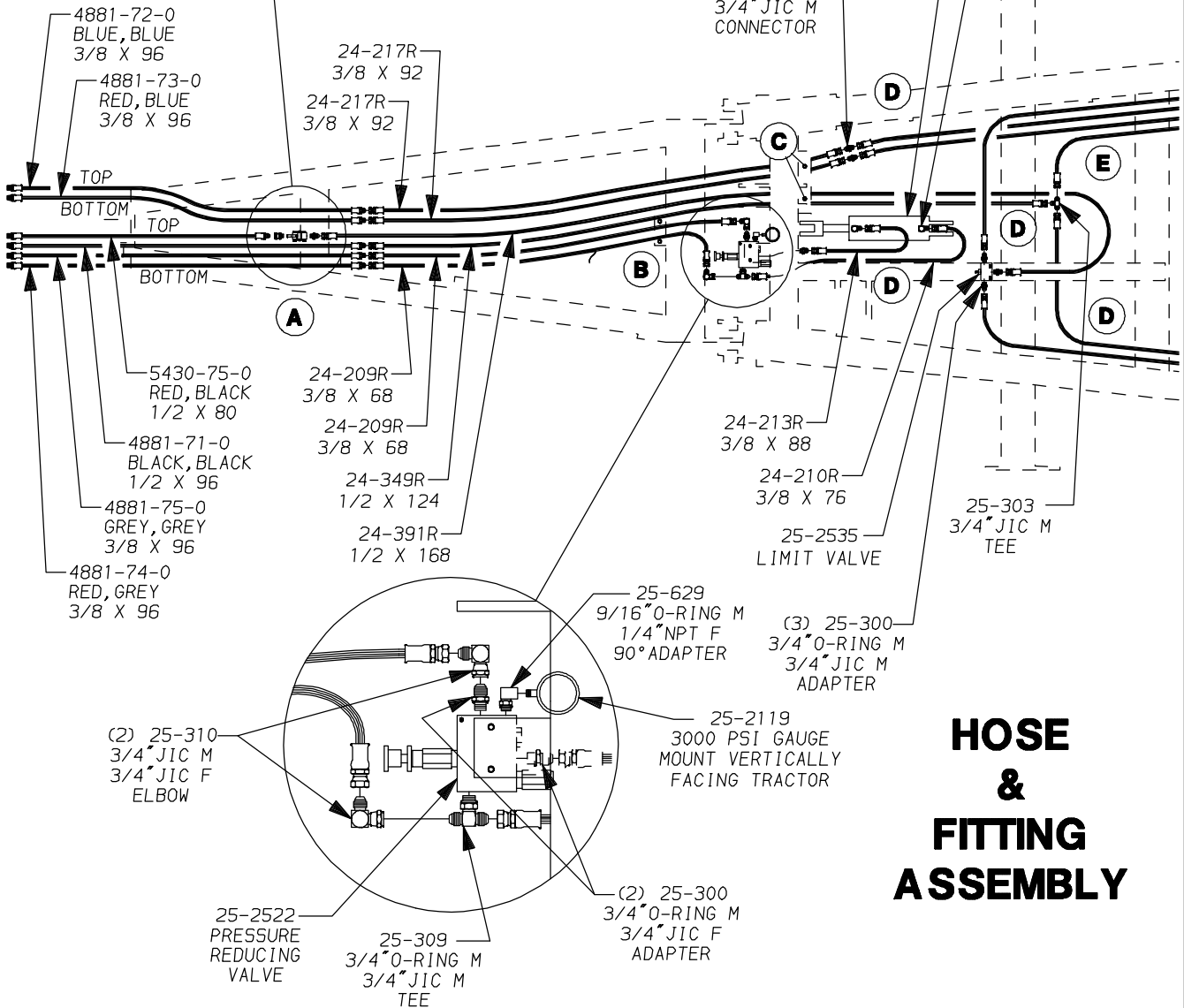
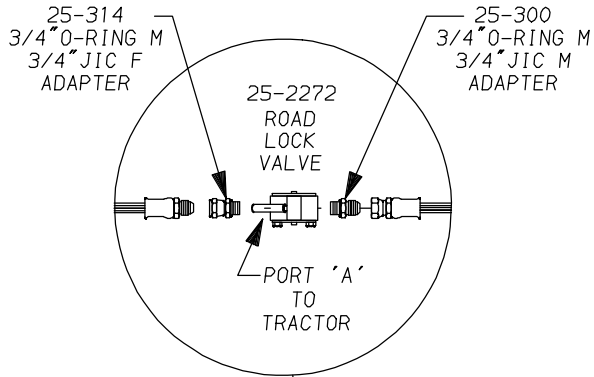
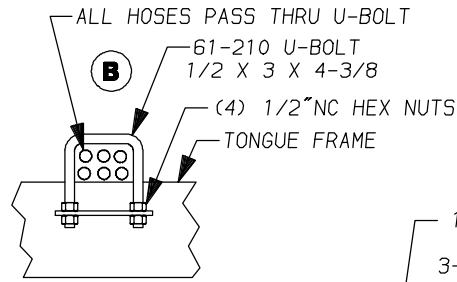
FOR MODELS - ALL

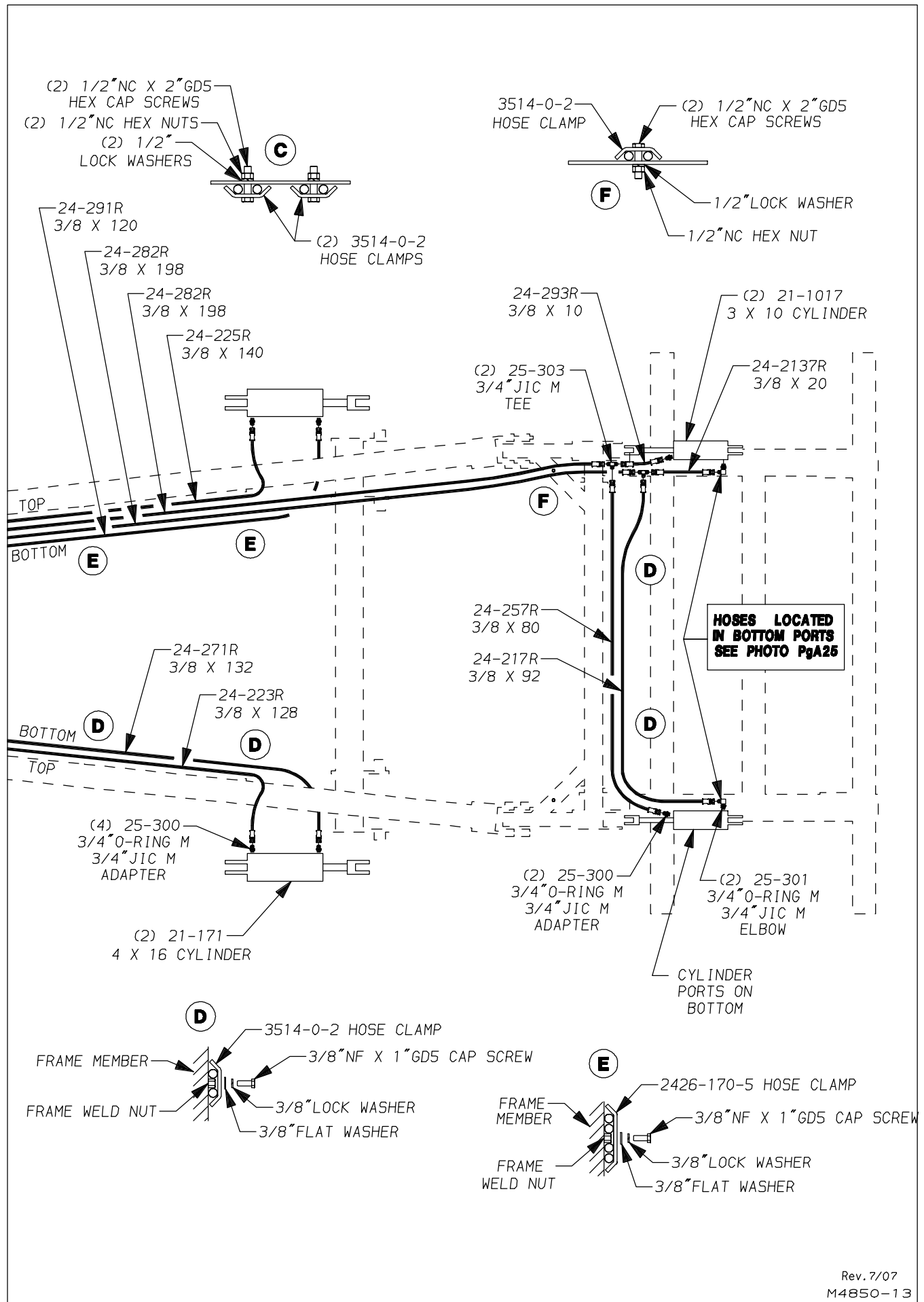
APR08

Item	Part Number	Part Description	Qty.
1	2426-170-5	Hose Clamp	4
2	25-2272	Check Valve, Manual Release	Spec.
3	4850-0-28	Hose Cover Plate	1
4	4850-39-0	Hose Stand Weldment	1
5	60-626	3/16" Dia. x 1-1/2" Roll Pin	1
6	60-716	#3 Hair Pin Cotter	1
7	62-417	1/4NC x 1" Gd5 Cap Screw	2
8	62-462	1/2NC x 2-1/4" Gd5 Cap Screw	2
9	62-792	5/16NC x 2" Gd5 Cap Screw	Spec.
10	6200-90-0	Pin Assembly (Includes Items 5 & 6)	1
11	63-100	1/4NC Hex Nut	2
12	63-106	1/2NC Hex Nut	4
13	63-144	5/16NC Hex Jam Nut (included with valve)	4
14	64-100	1/4" STD. Lock Washer	2
15	64-108	1/2" STD. Flat Washer	2
16	74-465	Decal, Transport Lock Valve	1
17	74-572	Decal, Wing Transport Lock - 12' & 15'	1
18	74-574	Decal, Wheel Transport Lock	1
19	74-612	Decal, Hose Grip Color Guide (4850)	1
20	79-397	Plug Storage Receptacle	1
21	3514-0-2	Hose Clamp - 18' & 21'	Spec.

12' & 15' MODELS

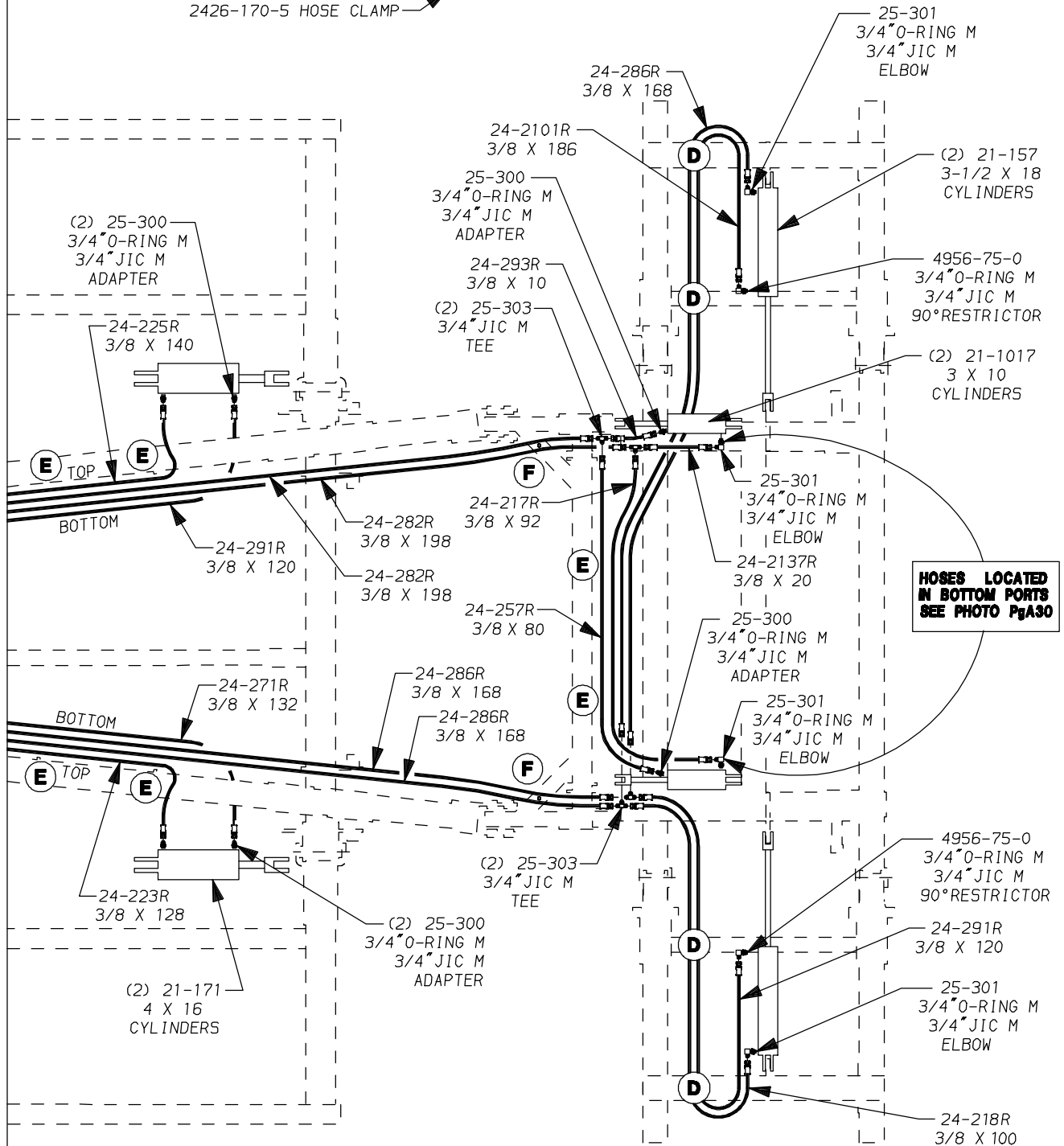
A SEE HOSE STAND ASSEMBLY ON PREVIOUS PAGE



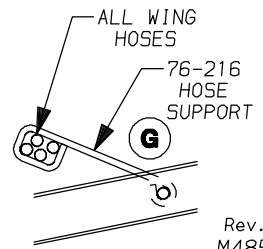
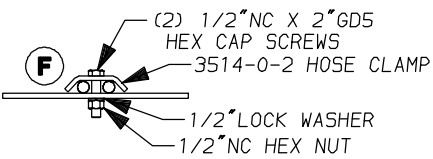
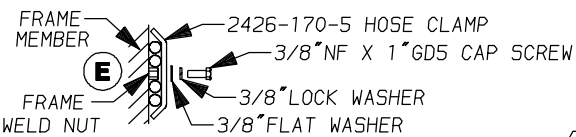


HOSE & FITTING ASSEMBLY

- (2) 1/2"NC X 2"GD5 CAP SCREWS
- (2) 1/2"NC HEX NUTS
- (2) 1/2"LOCK WASHERS
- 3514-0-2 HOSE CLAMP
- 2426-170-5 HOSE CLAMP

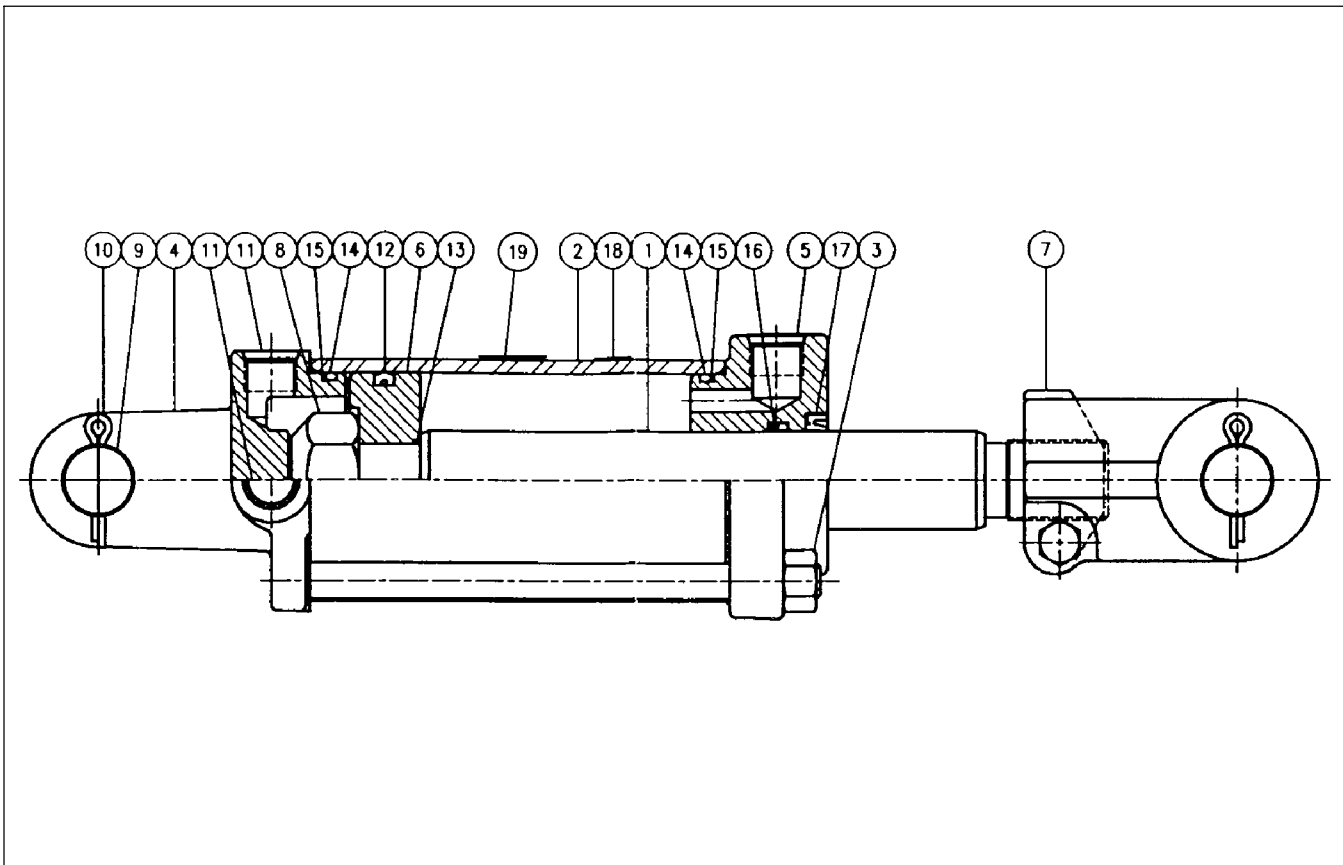


HOSES LOCATED IN BOTTOM PORTS SEE PHOTO PgA30



Rev. 7/07
 M4850-48

PRINCE HYDRAULIC CYLINDER



21-1017 3" X 10" PRINCE HYDRAULIC CYLINDER ASSEMBLY (DA/TR)

APR08

Retracted - 22-1/4"

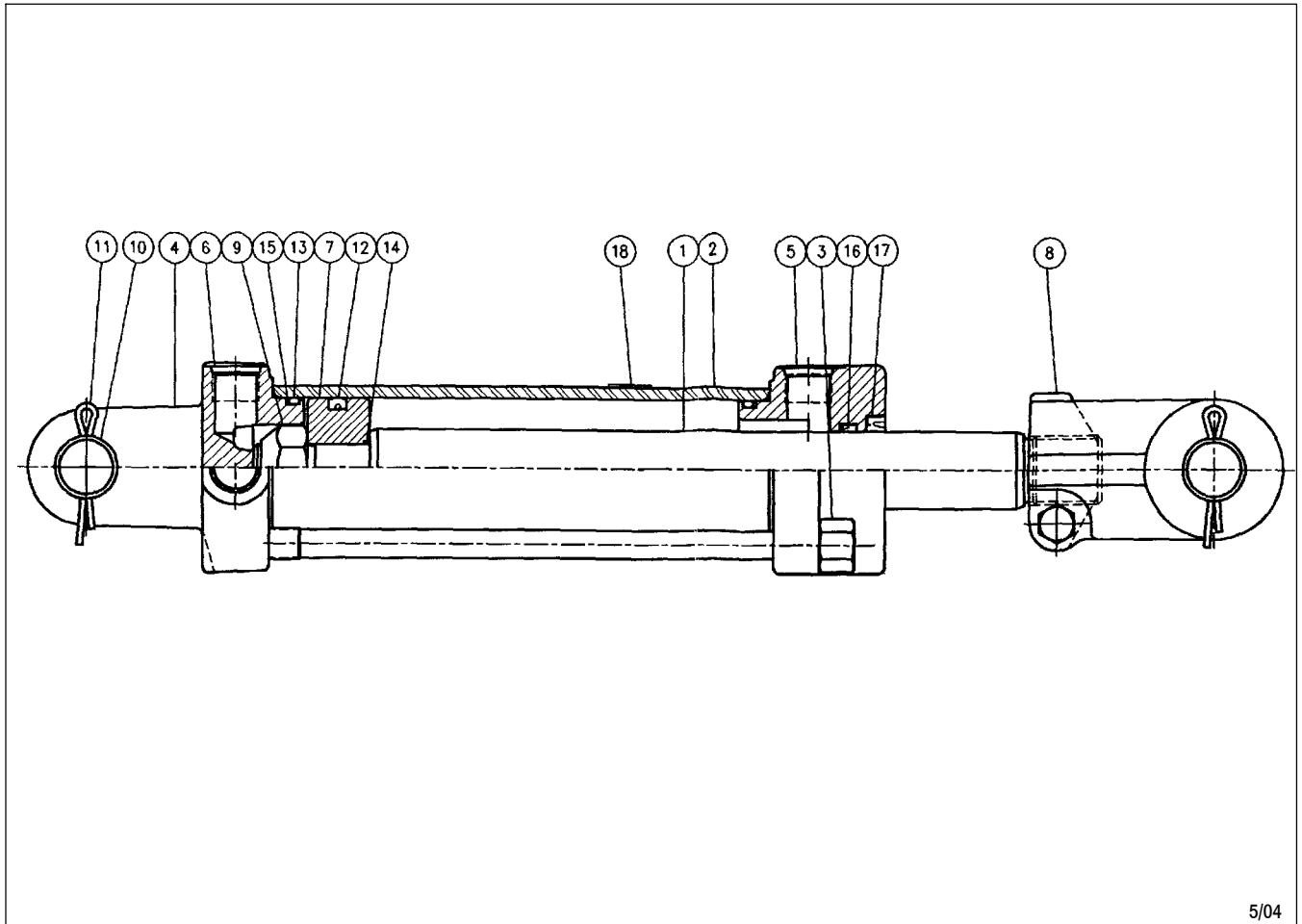
Extended - 32-1/4"

Stroke - 10"

Rod Diameter - 1-3/8"

Item	Part Number	Part Description	Qty.
1	21-2106	Piston Rod	1
2	21-2107	Tube	1
3	21-2171	Tie Rod Assembly	4
4	21-364	Butt	1
5	21-933	Gland	1
6	21-934	Piston	1
7	21-799	Clevis Assembly	1
8	21-225	Lock Nut	1
9	21-376	Clevis Pin	2
10		3/16" DIA. x 1-3/4" Cotter Pin	4
11	21-404	Port Plug	3
12	★	Crown Seal	1
13	★	O-Ring	1
14	★	O-Ring	2
15	★	Back-Up Washer	2
16	★	U-Cup	1
17	★	Wiper	1
18	74-537	Seal Kit Decal	1
19	74-113	Cylinder WARNING Decal	1
	21-937	Seal Kit (★ Items Included in Kit)	

PRINCE HYDRAULIC CYLINDER

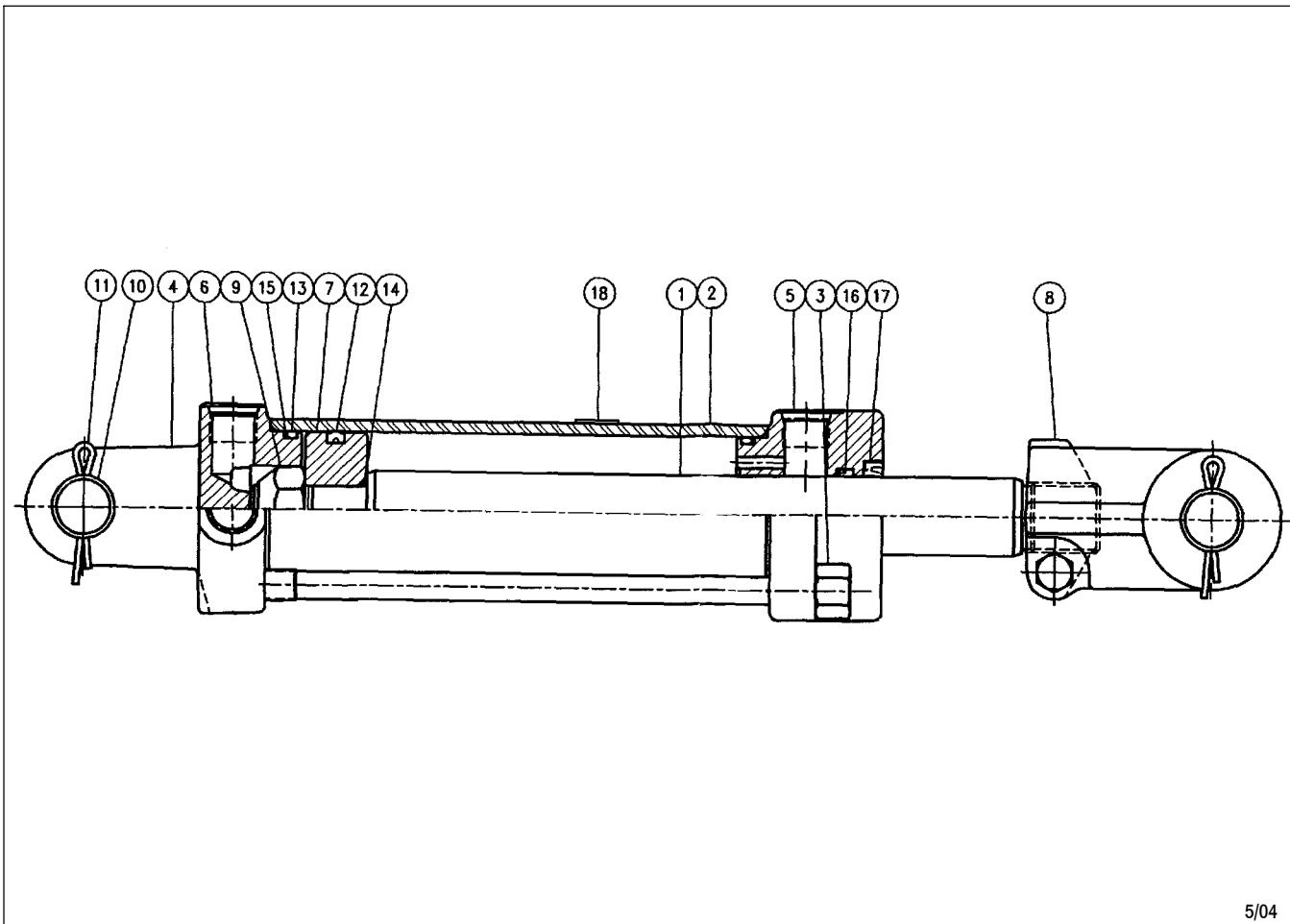


5/04

21-1035 2-1/4" X 12" PRINCE HYDRAULIC CYLINDER ASSEMBLY MAY04
Retracted - 24-1/4" Stroke - 12" Extended - 36-1/4" Rod Diameter - 1-1/4"

Item	Part Number	Part Description	Qty.
1	21-2177	Piston Rod	1
2	21-2186	Tube	1
3	21-2179	Tie Rod Assembly	4
4	21-2187	Butt	1
5	21-2188	Gland	1
6	21-404	#8 SAE Plug	3
7	21-2189	Piston	1
8	21-2183	Clevis Assembly	1
9	63-114	Lock Nut	1
10	21-376	Clevis Pin	2
11		Cotter Pin	4
12	★	Crown Seal	1
13	★	O-Ring	2
14	★	O-Ring	1
15	★	Back-Up Washer	2
16	★	U-Cup	1
17	★	Wiper	1
18	74-113	Cylinder Warning Decal	1
	● 21-2172	Seal Kit (★ Items Included in Kit)	
	● Not Included in Cylinder Assembly		

PRINCE HYDRAULIC CYLINDER



5/04

21-1036 2-1/2" X 12" PRINCE HYDRAULIC CYLINDER ASSEMBLY

MAY04

Retracted - 24-1/4"

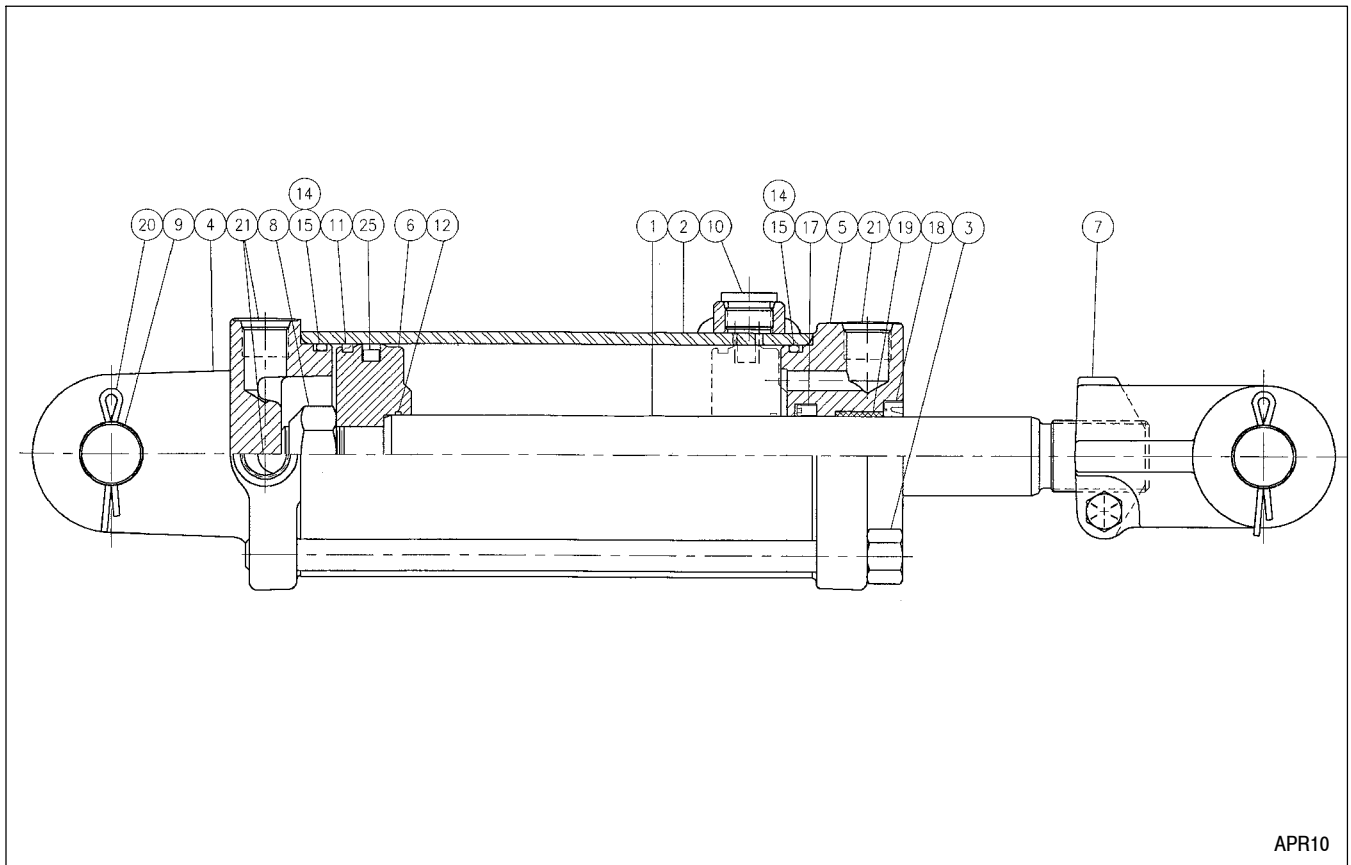
Stroke - 12"

Extended - 36-1/4"

Rod Diameter - 1-1/4"

Item	Part Number	Part Description	Qty.
1	21-2177	Piston Rod	1
2	21-2178	Tube	1
3	21-2179	Tie Rod Assembly	4
4	21-2180	Butt	1
5	21-2181	Gland	1
6	21-404	#8 SAE Plug	3
7	21-2182	Piston	1
8	21-2183	Clevis Assembly	1
9	63-114	Lock Nut	1
10	21-376	Clevis Pin	2
11		Cotter Pin	4
12	★	Crown Seal	1
13	★	O-Ring	2
14	★	O-Ring	1
15	★	Back-Up Washer	2
16	★	U-Cup	1
17	★	Wiper	1
18		Cylinder Warning Decal	1
	● 21-2173	Seal Kit (★ Items Included in Kit)	
	●	Not Included in Cylinder Assembly	

PRINCE HYDRAULIC CYLINDER

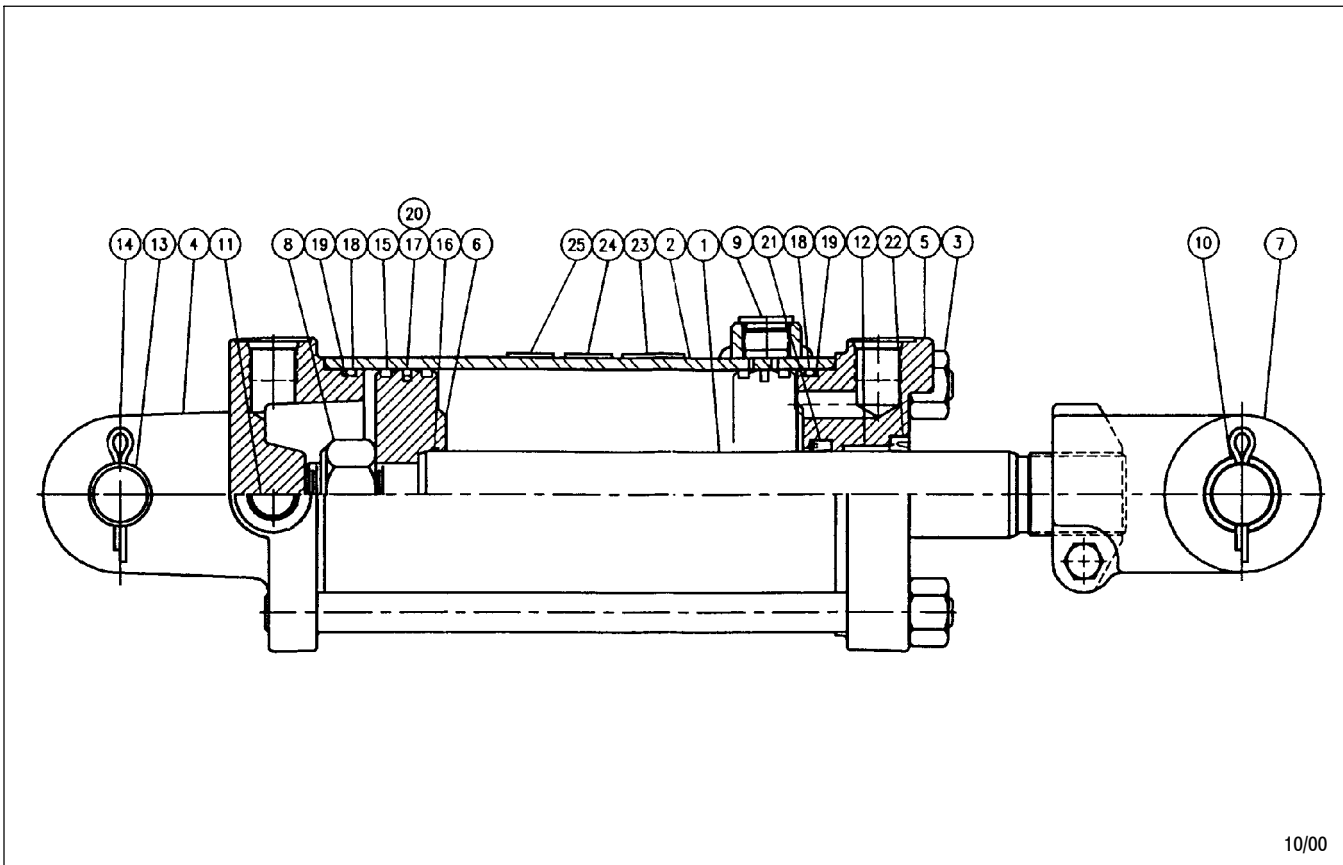


APR10

21-1010 3-1/2" X 12" PRINCE HYDRAULIC CYLINDER ASSEMBLY (Rephase) APR10
Retracted - 24-1/4" Extended - 36-1/4" Stroke - 12" Rod Diameter - 1-1/4"

Item	Part Number	Part Description	Qty.
1	21-2174	Piston Rod	1
2	21-2175	Tube Assembly	1
3	21-2176	Tie Rod Assembly	4
4	21-421	Butt	1
5	21-2098	Gland	1
6	21-2229	Piston	1
7	21-799	Clevis Assembly	1
8	21-463	Lock Nut	1
9	21-376	Clevis Pin	2
10	21-702	Port Plug	1
11	★	Bearing Ring	2
12	★	O-Ring	1
13	★	O-Ring	1
14	★	O-Ring	2
15	★	Back-Up Washer	2
16	★	Teflon Seal	1
17	★	Rectangular Teflon	1
18	★	U-Cup	1
19	★	Wiper	1
20	21-2120	Bushing	2
21		3/16"DIA. x 1-3/4" Cotter Pin	4
22	21-404	Port Plug	3
23	74-113	Cylinder WARNING Decal	1
	21-2088	Seal Kit (★ Items Included in Kit)	

PRINCE HYDRAULIC CYLINDER

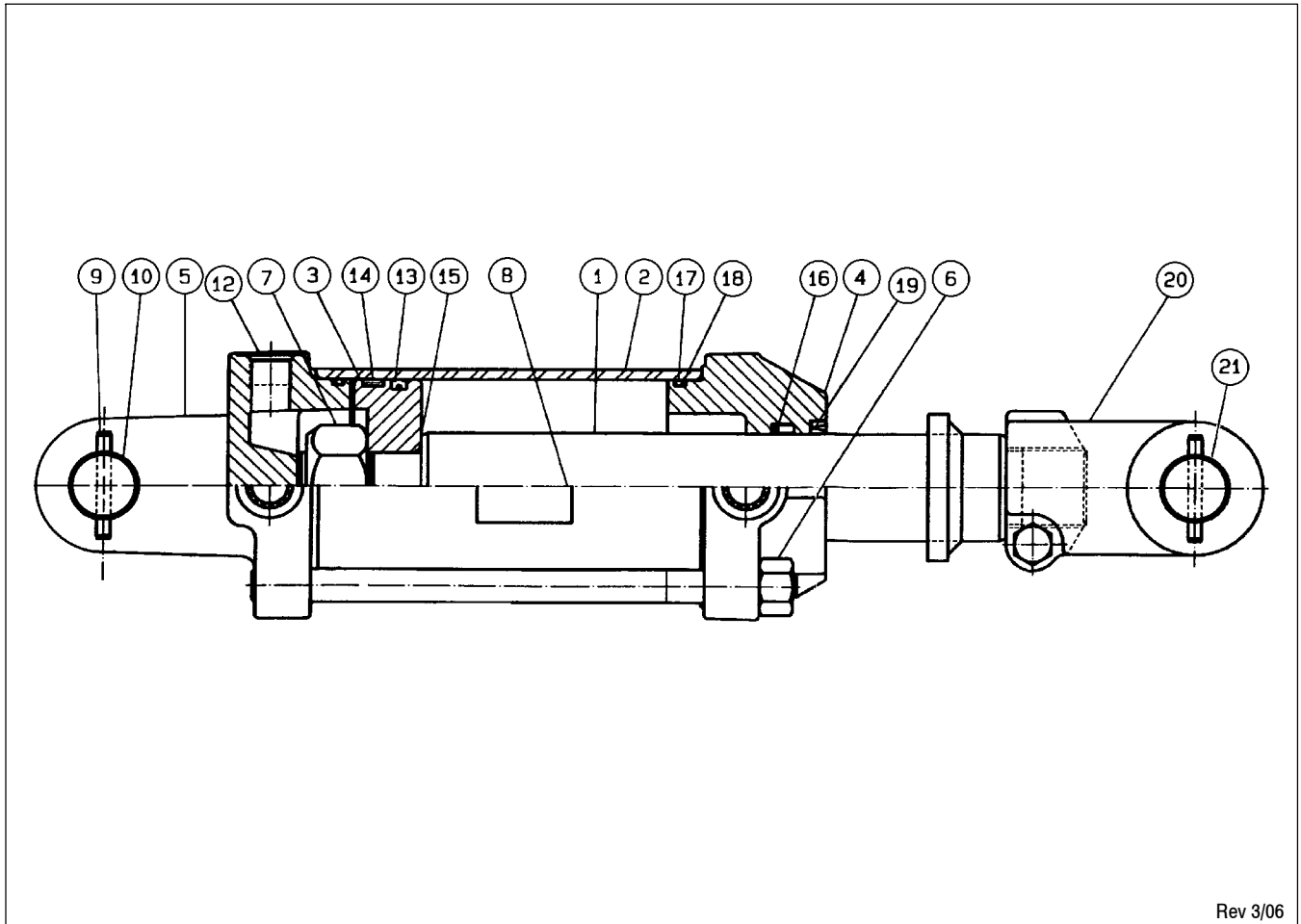


10/00

21-1012 4" X 12" PRINCE HYDRAULIC CYLINDER ASSEMBLY (Series) APR08
Retracted - 24-1/4" Extended - 36-1/4" Stroke - 12" Rod Diameter - 1-3/8"

Item	Part Number	Part Description	Qty.
1	21-2137	Piston Rod	1
2	21-2138	Tube Assembly	1
3	21-2111	Tie Rod Assembly	4
4	21-337	Butt	1
5	21-810	Gland	1
6	21-2212	Piston	1
7	21-2126	Clevis Assembly	1
8	21-225	Lock Nut	1
9	21-702	Port Plug	1
10	21-2127	Bushing	2
11	21-404	Port Plug	3
12	21-807	Bushing	1
13	21-260	Clevis Pin	2
14		3/16"DIA. x 1-3/4" Cotter Pin	4
15	★	Bearing Ring	2
16	★	O-Ring	1
17	★	O-Ring	1
18	★	O-Ring	2
19	★	Back-Up Washer	2
20	★	Teflon Seal	1
21	★	U-Cup	1
22	★	Wiper	1
23	21-443	Series Caution Decal	1
24	74-556	Seal Kit Decal	1
25	74-113	Cylinder WARNING Decal	1
	21-2059	Seal Kit (★ Items Included in Kit)	

PRINCE HYDRAULIC CYLINDER

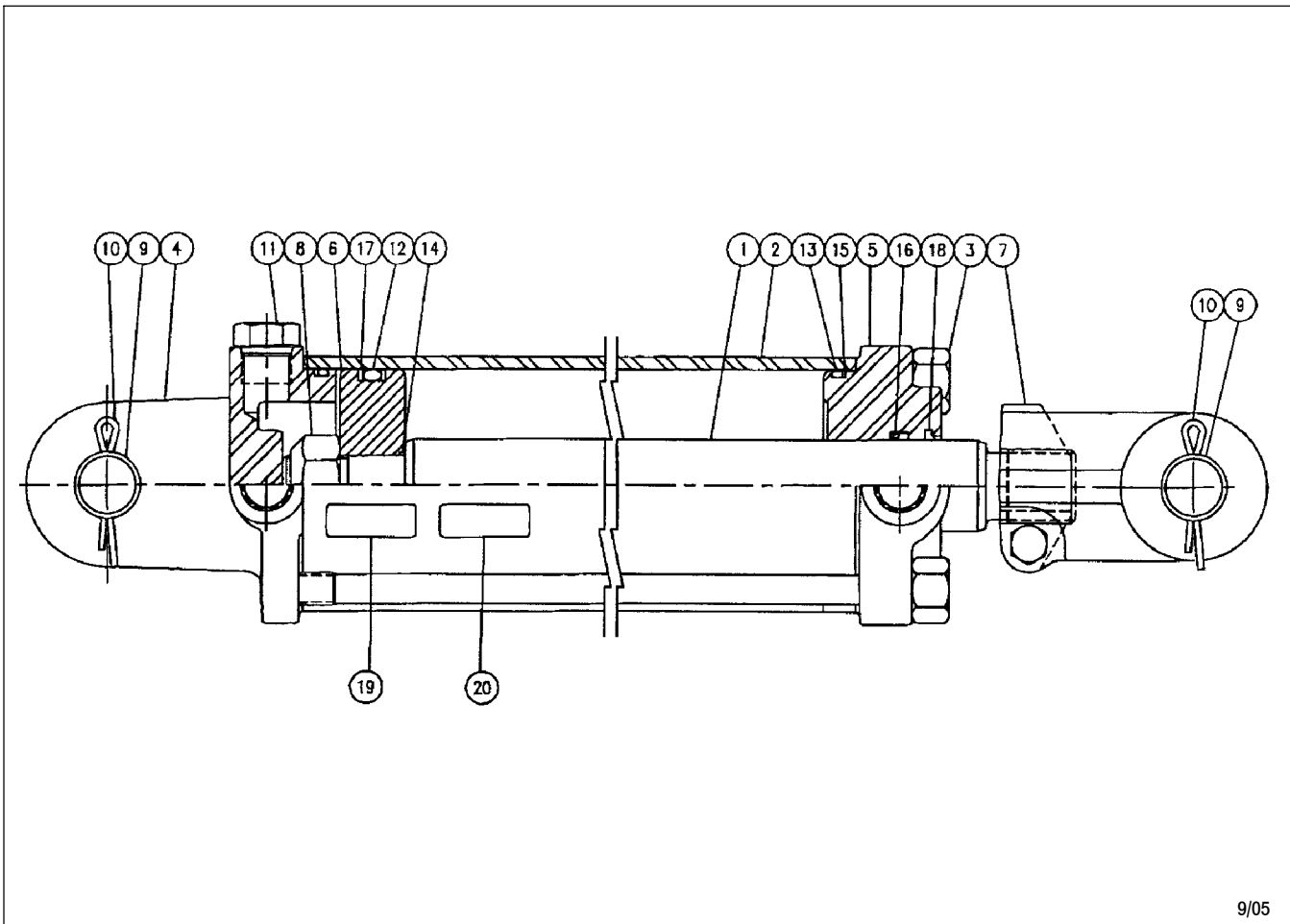


Rev 3/06

21-171 4" X 16" PRINCE HYDRAULIC CYLINDER ASSEMBLY (STD) APR10
Retracted - 31-1/2" Stroke - 16" Extended - 47-1/2" Rod Diameter - 2"

Item	Part Number	Part Description	Qty.
1	21-893	Piston Rod	1
2	21-282	Tube	1
3	21-879	Piston	1
4	21-894	Gland	1
5	21-738	Butt	1
6	21-288	Tie Rod Assembly	4
7	21-286	Lock Nut	1
8	74-113	Cylinder Warning Decal	1
9		1/4" DIA. x 2" Roll Pin	4
10	21-872	Clevis Pin	2
11			
12	21-404	#8 SAE Plug	3
13	★	Crown Seal	1
14	★	Bearing Ring	1
15	★	O-Ring	1
16	★	U-Cup	1
17	★	O-Ring	1
18	★	Back-Up Washer	2
19	★	Wiper	1
20	21-2227	Clevis Assembly (Includes Item 21)	1
21	21-2157	Wear Sleeve	2
	● 21-895	Seal Kit (★ Items Included in Kit)	
	● Not Included in Cylinder Assembly		

PRINCE HYDRAULIC CYLINDER

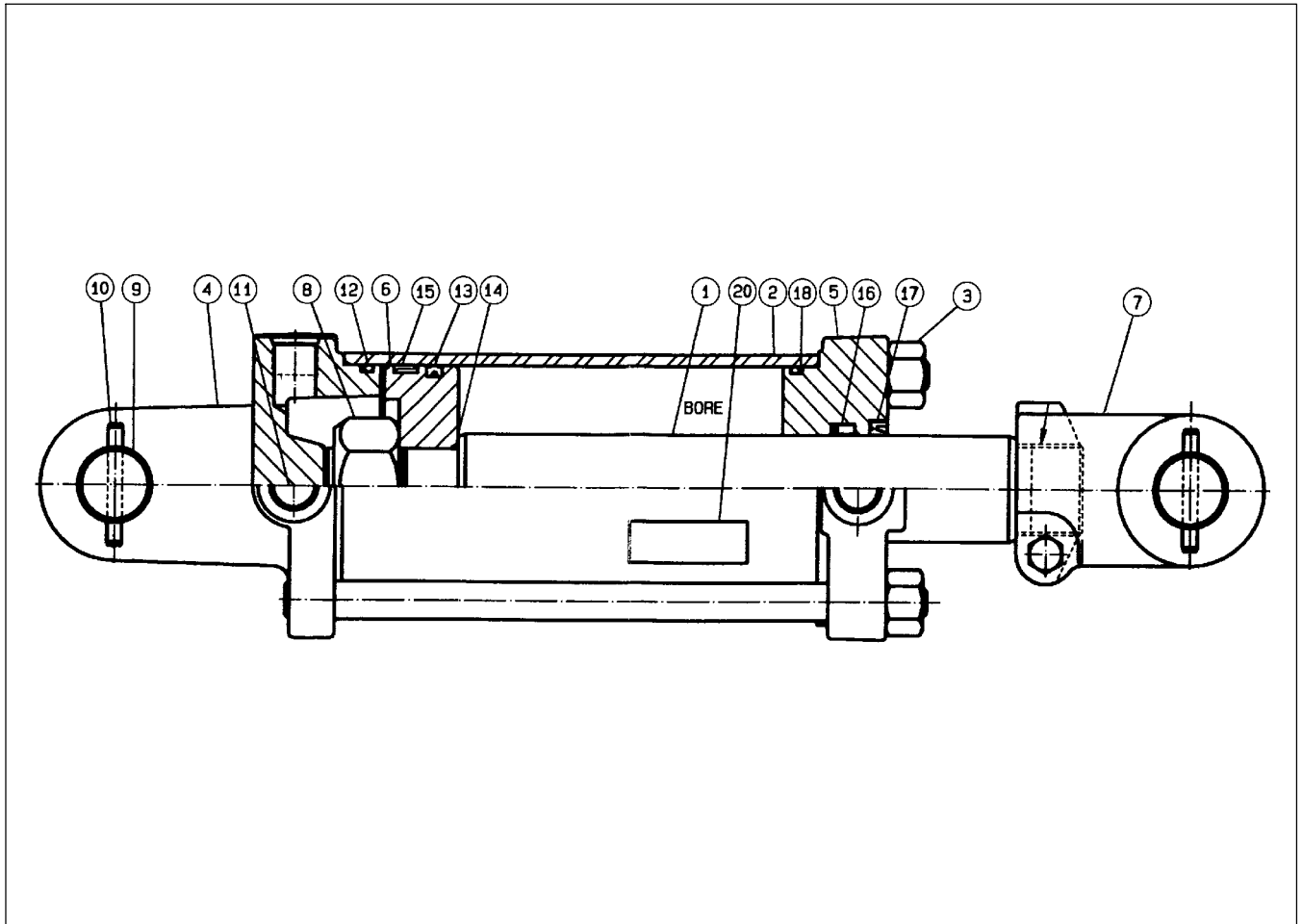


9/05

21-157 3-1/2" X 18" PRINCE HYDRAULIC CYLINDER ASSEMBLY (STD.PS) SEP05
Retracted - 28-1/4" Extended - 46-1/4" Stroke - 18" Rod Diameter - 1-3/8"

Item	Part Number	Part Description	Qty.
1	21-724	Piston Rod	1
2	21-725	Tube	1
3	21-726	Tie Rod Assembly	4
4	21-421	Butt	1
5	21-727	Gland	1
6	21-728	Piston	1
7	21-799	Clevis Assembly	1
8	21-463	Lock Nut	1
9	21-260	Clevis Pin	2
10		3/16"DIA. x 1-1/2" Cotter Pin	4
11	21-404	#8 SAE Plug	3
12	★	O-Ring	1
13	★	O-Ring	2
14	★	O-Ring	1
15	★	Back-Up Washer	2
16	★	U-Cup	1
17	★	Back-Up Washer	2
18	★	Wiper	1
19	21-732	Decal	1
20	74-113	Cylinder Warning Decal (not shown)	1
	● 21-733	Seal Kit (★ Items Included in Kit)	
● Not Included in Cylinder Assembly			

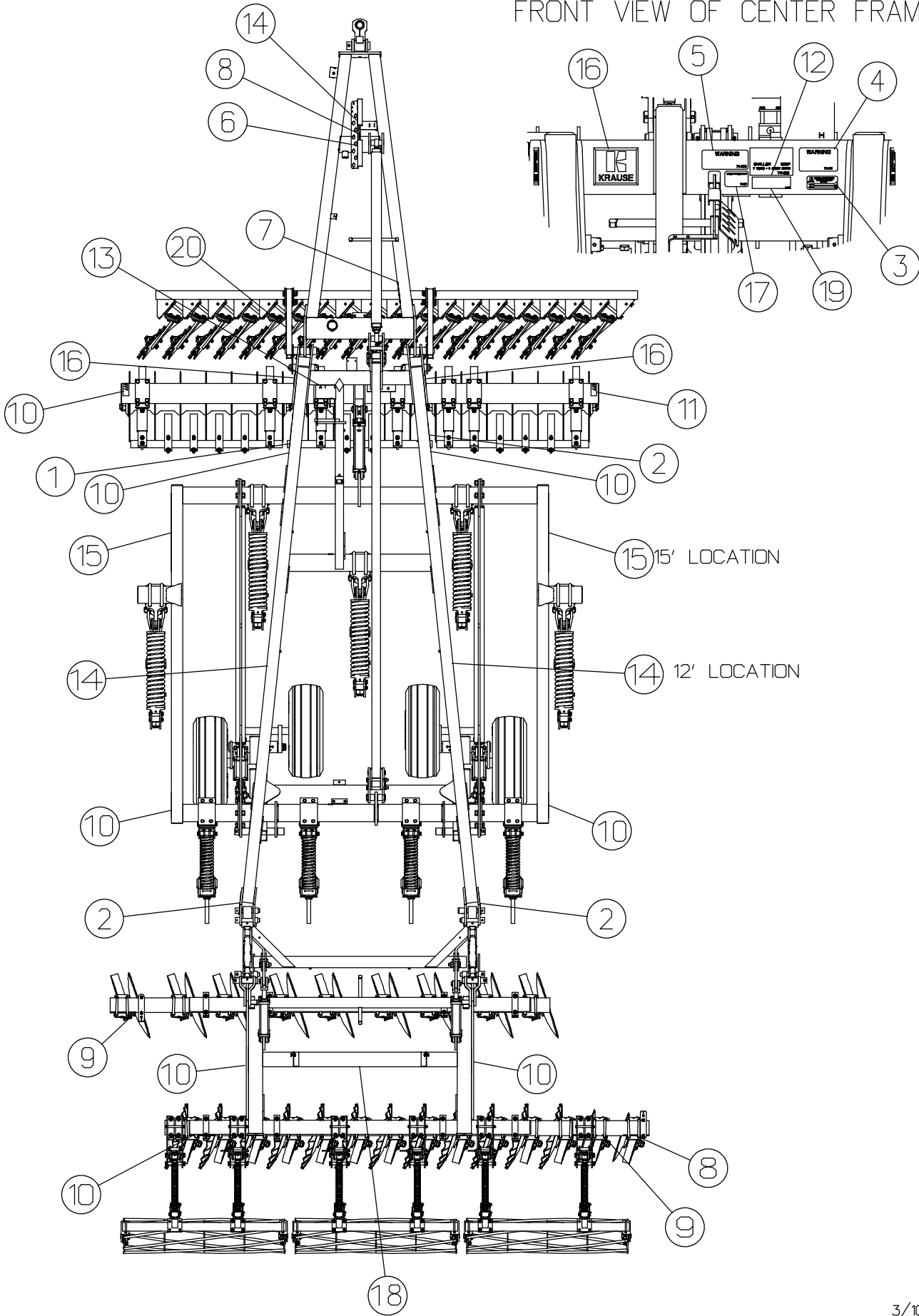
PRINCE HYDRAULIC CYLINDER



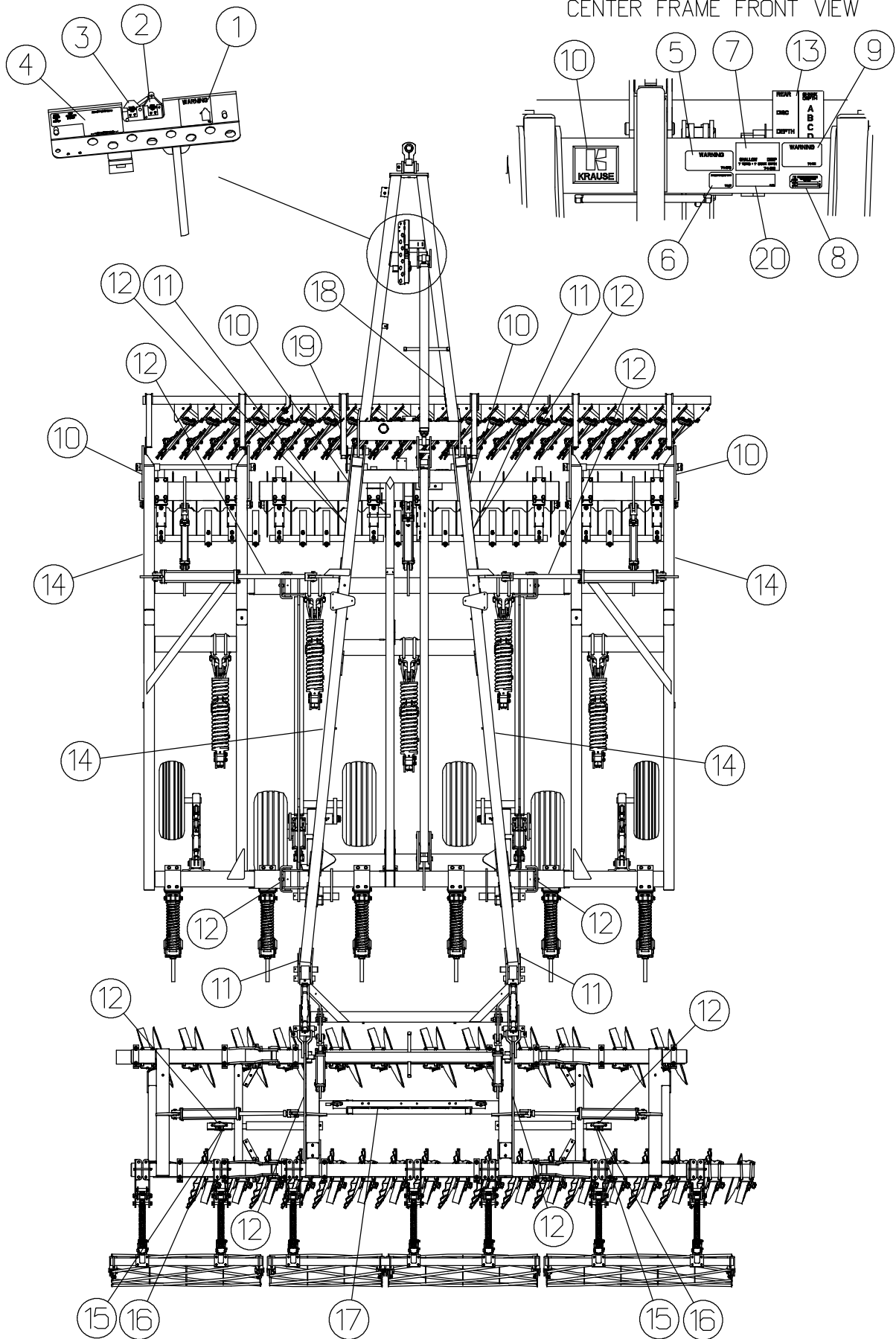
21-181 4" X 24" PRINCE HYDRAULIC CYLINDER ASSEMBLY (STD) DEC00
Retracted - 36-3/4" Stroke - 24" Extended - 60-3/4" Rod Diameter - 1-3/4"

Item	Part Number	Part Description	Qty.
1	21-904	Piston Rod	1
2	21-222	Tube	1
3	21-2046	Tie Rod Assembly	4
4	21-738	Butt	1
5	21-878	Gland	1
6	21-879	Piston	1
7	21-507	Clevis Assembly	1
8	21-286	Lock Nut	1
9	21-859	Clevis Pin	2
10		1/4" DIA. x 2" Roll Pin	4
11	21-404	Port Plug	3
12	★	O-Ring	2
13	★	Crown Seal	1
14	★	O-Ring	1
15	★	Bearing Ring	1
16	★	U-Cup	1
17	★	Wiper	1
18	★	Back-Up Washer	2
19			
20	74-113	Cylinder Warning Decal	1
	● 21-857	Seal Kit (★ Items Included in Kit)	
	●	Not Included in Cylinder Assembly	

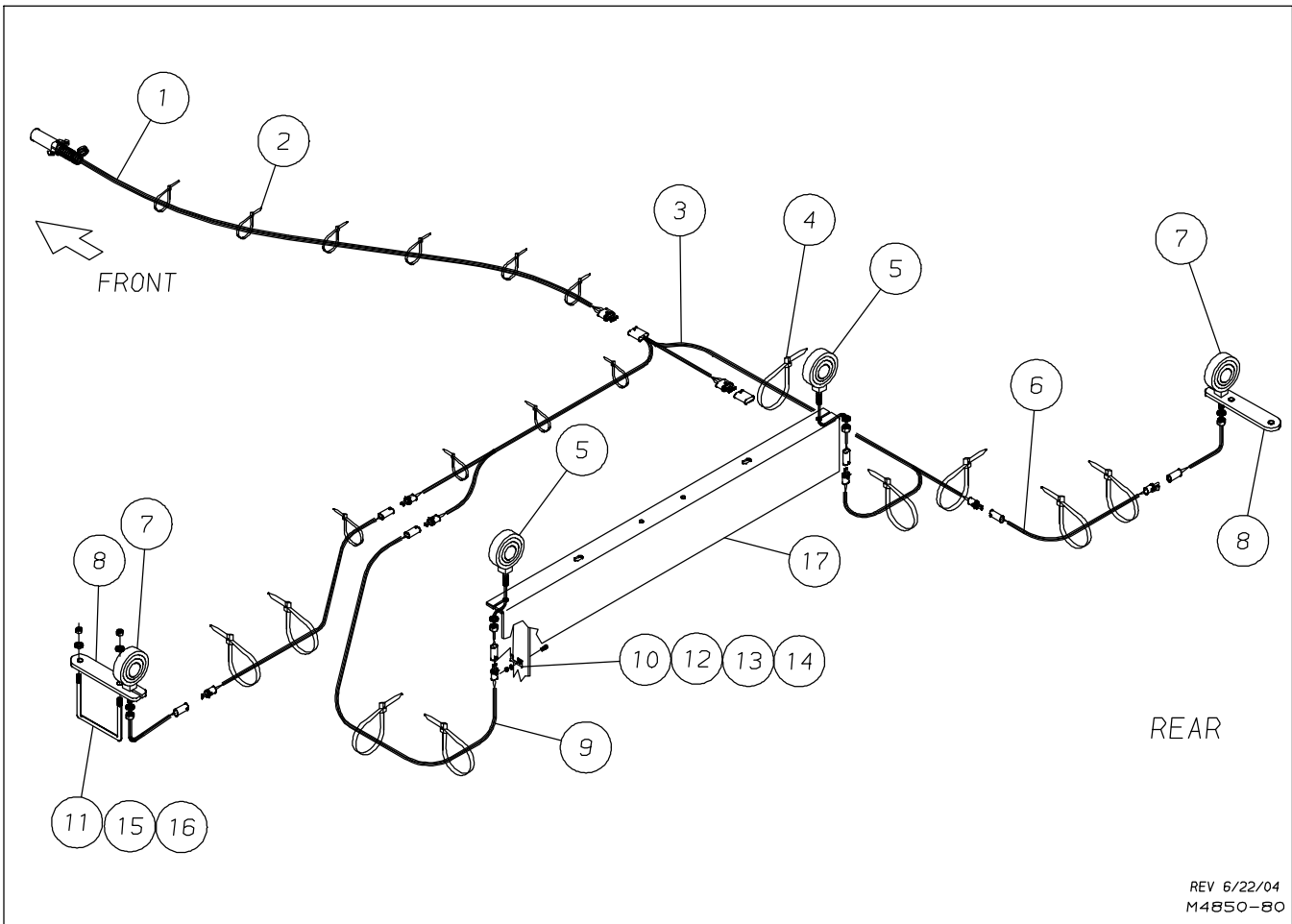
FRONT VIEW OF CENTER FRAME



CENTER FRAME FRONT VIEW



LIGHT KIT



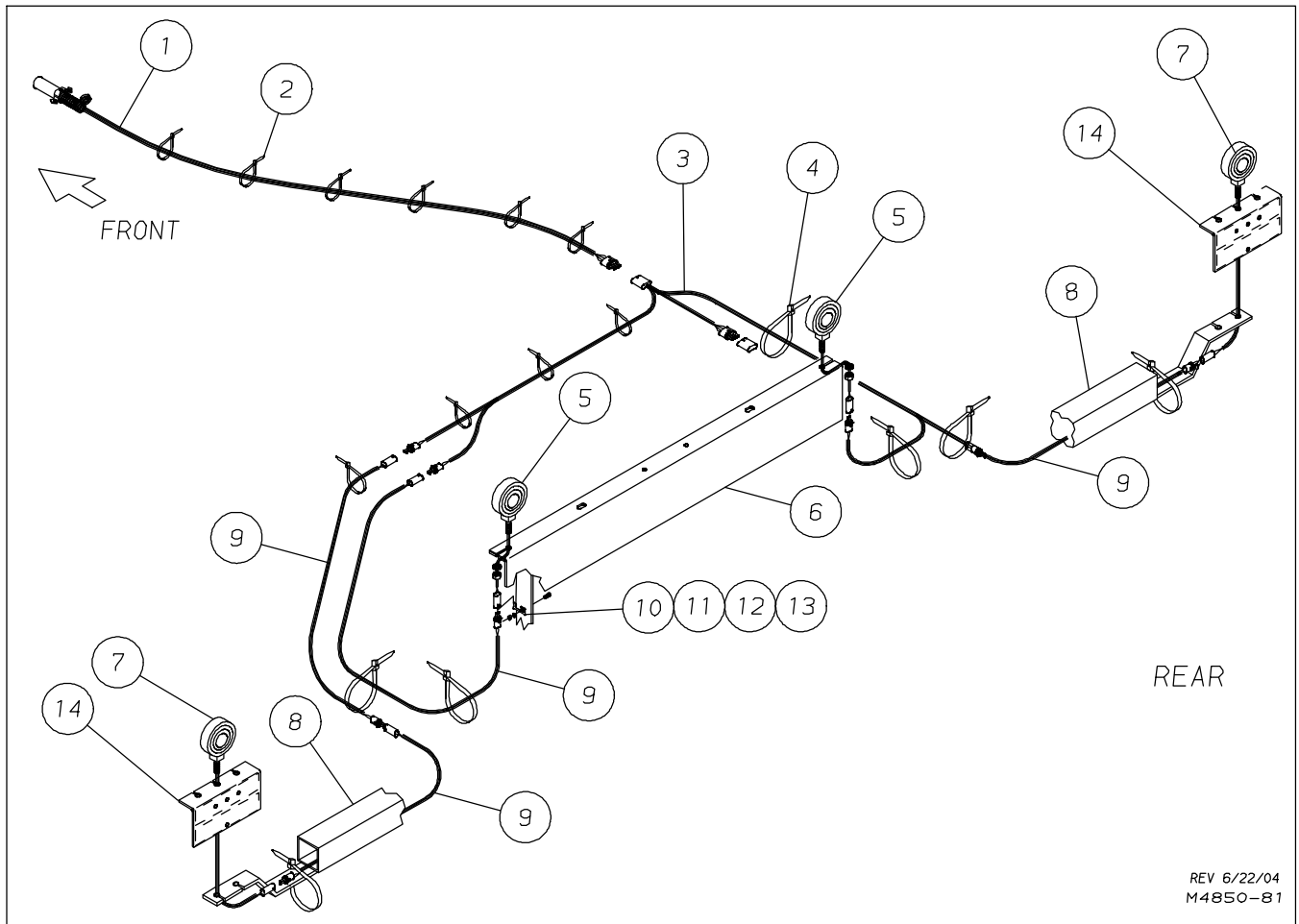
REV 6/22/04
M4850-80

FOR MODELS - 12' & 15'

APR/08

Item	Part Number	Part Description	Qty.
1	79-553	36' Tractor Harness	1
2	25-1157	7-1/2" Stay Strap	12
3	79-546	Center Wire Harness	1
4	25-126	30" Black Stay Strap	9
5	79-578	Lamp, Single LED Red Stop, Turn	2
6	79-399	6' Wire Extension	2
7	79-577	Lamp, Double LED Amber Turn/Flash	2
8	4850-0-27	Light Bracket	2
9	79-551	4' Wire Extension	1
10	79-552	Retaining Clip	2
11	61-218	U-Bolt, .50 x 5.06 x 4.25"	2
12	62-486	5/16" x 3/4" Cap Screw	2
13	64-148	5/16" Lock Washer	2
14	63-135	5/16 Hex Nut	2
15	64-107	1/2" Lock Washer	4
16	63-106	1/2" Hex Nut	4
17	5630-0-33	Decal and SMV Mount	1

LIGHT KIT



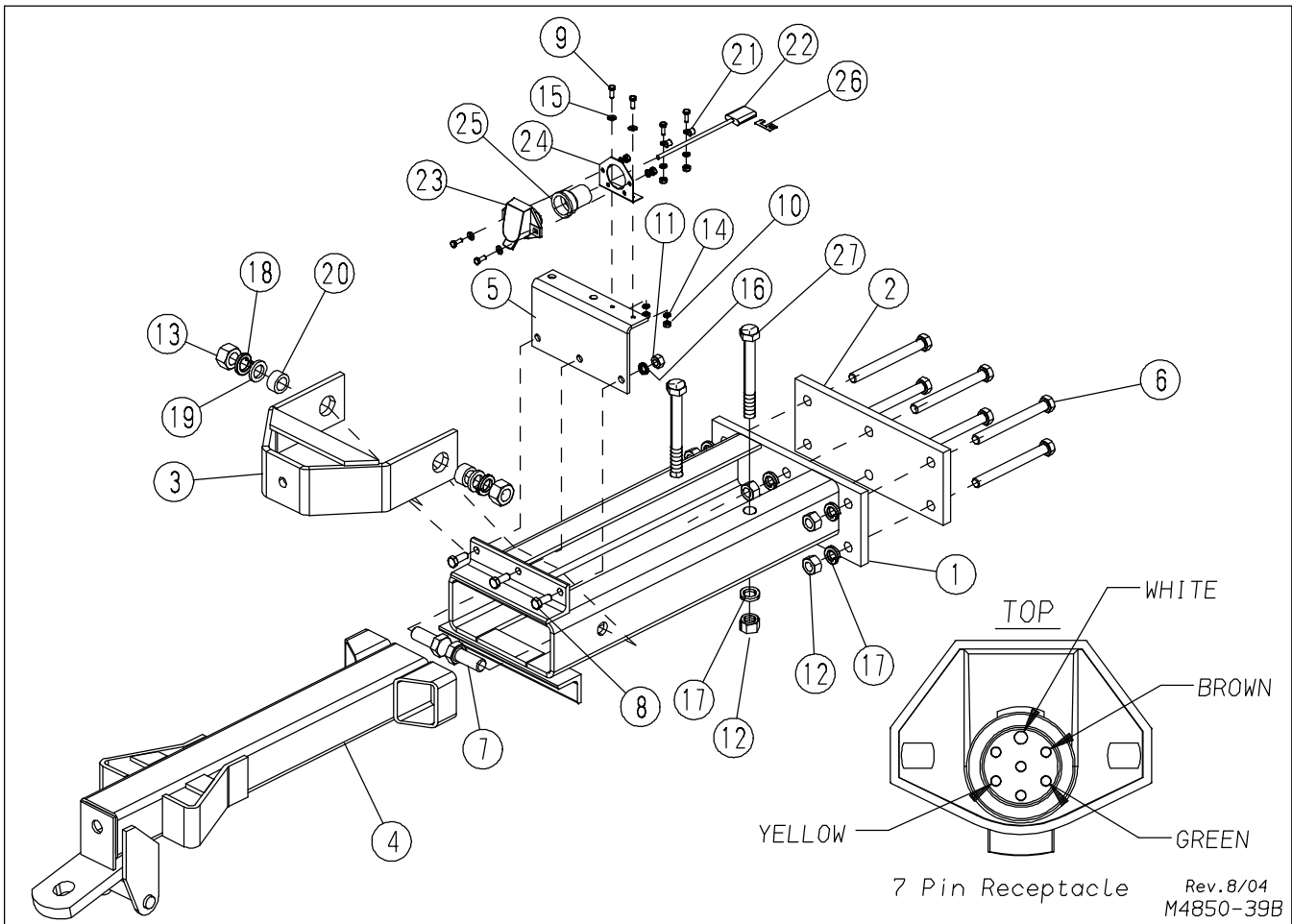
REV 6/22/04
M4850-81

FOR MODELS - 18' & 21'

APR08

Item	Part Number	Part Description	Qty.
1	79-553	36' Tractor Harness	1
2	25-1157	7-1/2" Stay Strap	12
3	79-546	Center Wire Harness	1
4	25-126	30" Black Stay Strap	7
5	79-578	Lamp, Single LED Red Stop, Turn	2
6	5630-0-33	Decal and SMV Mount	1
7	79-577	Lamp, Double LED Amber Turn/Flash	2
8	4850-8022-0	Light Bracket	2
9	79-551	4' Wire Extension	4
10	79-552	Retaining Clip	2
11	62-486	5/16" x 3/4" Cap Screw	2
12	64-148	5/16" Lock Washer	2
13	63-135	5/16 Hex Nut	2
14	4800-172-0	Light Mounting Plate Assembly	2

TRAIL HITCH ASSEMBLY



7 Pin Receptacle Rev. 8/04
M4850-39B

FOR MODELS - ALL

APR04

Item	Part Number	Part Description	Qty.
1	4850-80-0	Channel Guide Weldment	1
2	4850-80-2	Bolt Plate	1
3	4850-82-0	Latch Bar Weldment	1
4	4850-83-0	Sliding Hitch Weldment	1
5	5630-0-37	Rear Receptacle Mount	1
6	62-217	3/4NC x 7-1/2" Gd5 Cap Screw	7
7	62-236	1NC x 2-1/2" Gd5 Cap Screw	2
8	62-420	1/2NC x 1-1/4" Gd5 Cap Screw	3
9	62-507	1/4NC x 3/4" Gd5 Cap Screw	6
10	63-100	1/4NC Hex Nut	6
11	63-106	1/2NC Hex Nut	3
12	63-112	3/4NC Hex Nut	8
13	63-117	1NC Hex Nut	2
14	64-100	1/4" STD. Lock Washer	6
15	64-101	1/4" STD. Flat Washer	4
16	64-107	1/2" STD. Lock Washer	3
17	64-112	3/4" STD. Lock Washer	8
18	64-118	1" STD. Lock Washer	2
19	64-119	1" STD. Flat Washer	2
20	742-0-16	Spacer	2
21	79-297	Loom Clamp 3/8" I.D.	2
22	79-401	Rear Receptacle Harness	1
23	79-475	7-Pin Receptacle	1
24	79-476	Receptacle Bracket	1
25	79-477	Receptacle Rubber Boot	1
26	79-552	Wire Harness, Retaining Clip	1
27	62-213	3/4NC x 6-1/2" GD5 Cap Screw	2